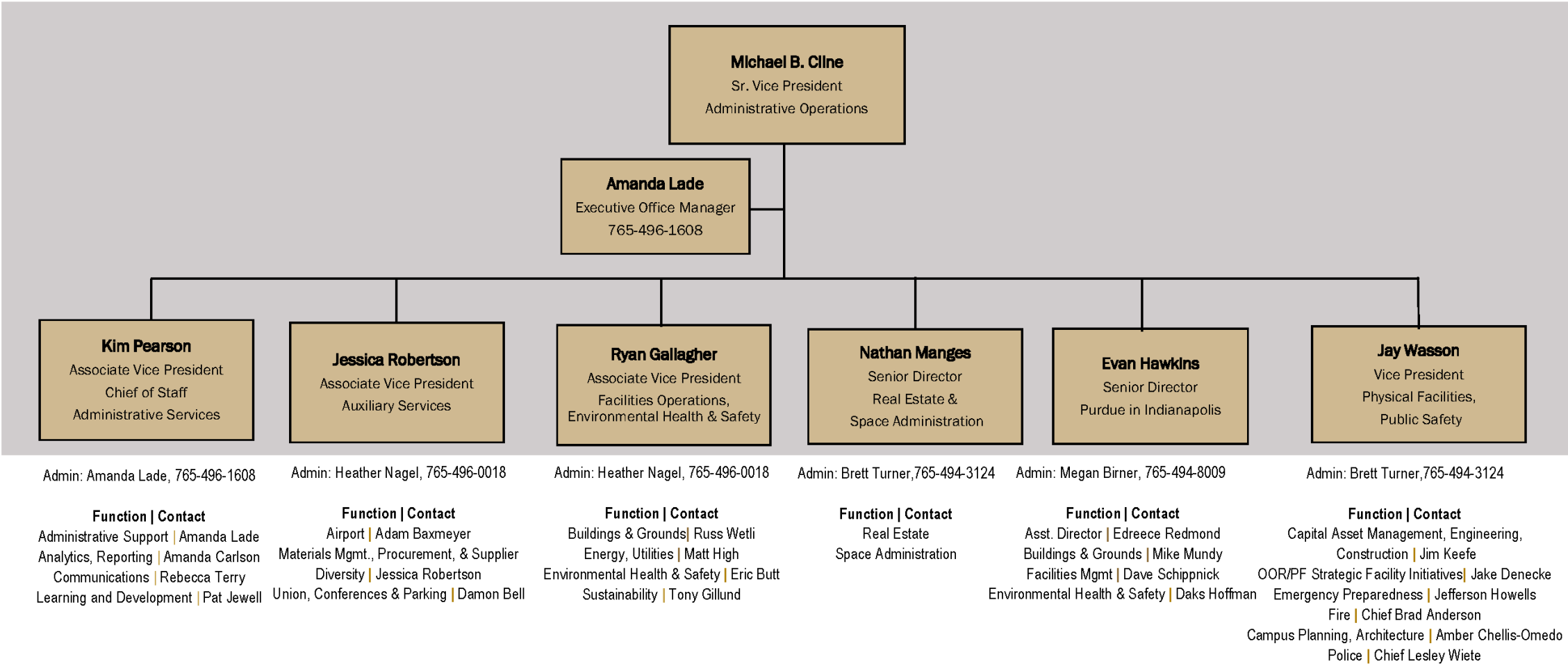


CAMPUS SAFETY NEW FACULTY ORIENTATION

Jefferson Howells
Director, Office of Emergency Preparedness

Administrative Operations Functional Org Chart



PURDUE UNIVERSITY POLICIES

Purdue University Policies

www.purdue.edu/policies

- Use of Facilities
 - Who can use them and how they can be used
 - Prohibits weapons, use of controlled substances (except those approved for research), etc.
- Persona Non Grata
 - Provides a “no trespassing” warning when appropriate
- Violent Behavior
 - Prohibits violent behavior or threats
 - Provides a structure for reporting behaviors of concern
- Environmental Health and Safety Compliance
 - Provides a structure for Purdue’s safety culture

FREEDOM OF EXPRESSION AT PURDUE UNIVERSITY

Freedom of Expression at Purdue University

Commitment to Freedom of Expression

“In a word, the university’s fundamental commitment is to the principle that debate or deliberation may not be suppressed because the ideas put forth are thought by some or even by most members of the university community to be offensive, unwise, immoral, or wrong-headed. It is for the individual members of the university community, not for the university as an institution, to make those judgments for themselves, and to act on those judgments not by seeking to suppress speech, but by openly and vigorously contesting the ideas that they oppose. Indeed, fostering the ability of members of the university community to engage in such debate and deliberation in an effective and responsible manner is an essential part of the university’s educational mission.”

OFFICE OF EMERGENCY PREPAREDNESS

Office of Emergency Preparedness

Emergency Plans, Procedures and Training

- Integrated Emergency Management Plan (IEMP)
- Building Emergency Plans
- Incident Management Teams WL/INDY
- Faculty preparedness resources, including syllabus requirements
- Emergency Procedures Guide
- PurdueALERT: Emergency Notification & Timely Warning system
- Training
 - All hazards awareness and emergency preparedness
 - Tabletop/discussion drills
 - Siren tests – monthly on 1st Saturday and each semester

Emergency Preparedness and Planning

PurdueALERT – Sign up for text alerts

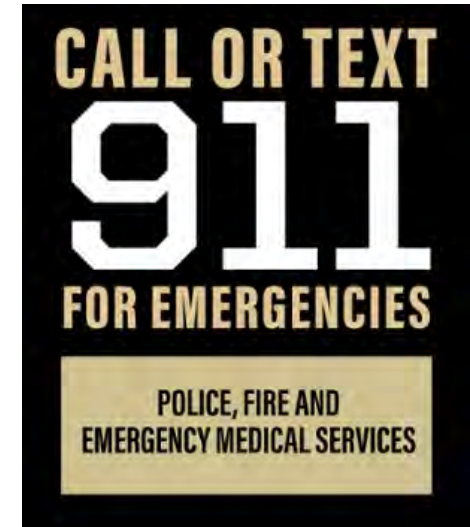
- How will you know when an emergency is occurring on campus?
 - Text, email, desktop popup alert, outdoor all hazards warning sirens, digital signs, Twitter, media releases, Alertus beacons in large classrooms
 - Check the website www.purdue.edu/ea for any updates
- Outdoor hazard warning sirens – signal to suspend class and secure shelter (siren outside - go indoors)
- Fire alarm and strobe lights – signal to suspend class and evacuate (siren inside - go outdoors)

PURDUE UNIVERSITY POLICE DEPARTMENT

Purdue University Police Department (PUPD)

About Us

- Fully sworn officers of the state, on duty 24/7, 365 days a year
- Here to serve you – if you don't know who to call, dial 765-494-8221 for information
- Call or text **911** and give your name and location first
- If you see something, say something
- #1 crime is theft of property



Purdue University Police Department (PUPD)

Safe Walk Program

If your class dismisses after dark, consider the free Safe Walk service from PUPD to escort members of the Purdue community home.

- Call (765) 494-SAFE (7233) to request a Safe Walk escort
 - Phone number is on the reverse of all ID cards
 - Purdue Student Security Patrol (PSSP) works in pairs, wear identification and have radio contact with PUPD
 - When PSSP is not available, a police officer will provide safe walk or ride

PURDUE UNIVERSITY FIRE DEPARTMENT

Purdue University Fire Department (PUFD)

About Us

- One of only 10 full-time campus fire departments in the nation
- Full-service fire department - on duty 24/7, 365 days a year
- Hazardous materials response team
- Technical rescue response team (high angle and confined space)
- Emergency Medical Services (EMS)
 - Two Advanced Life Support transport ambulances
 - One Advanced Life Support fire engine
- Airport rescue firefighters – FAA required
- Fire and life safety inspections
- Fire prevention training and public education

ENVIRONMENTAL HEALTH & SAFETY

Environmental Health & Safety (EHS)

About Us

- Policy: Environmental Health and Safety Compliance
- Integrated Safety Plan (ISP) – our safety management system and safety culture structure
 - Requires support from you and your leadership
 - Safety committees
 - Annual self audits & EHS audit
- Lab and shop safety training available online & in-person
- Assists with campus regulatory compliance: OSHA, EPA, DOT, IDEM, NRC, ISDH, DHS, FAA, DEA, IATA, etc.
- Hazardous waste removal – typically, at no charge
- OSHA First Report of Injury documentation

Environmental Health & Safety (EHS)

Compliance Expertise

Mita Juristyarini, PhD

- Research safety consultation; chemical, radioactive, biological
- Laboratory & building inspections
- Safety considerations for your new lab and personnel

Robin Ridgway, PhD

- Environmental health and safety regulatory compliance
- Air, land, water regulations
- Hazardous waste disposal
- West Lafayette and statewide

QUESTIONS?

THANK YOU