

# ***SPONSORED PROGRAM SERVICES (SPS)***

## ***NEW FACULTY ORIENTATION***

***AUGUST 2025***



Beth Siple  
Director, Sponsored Program Administration  
Sponsored Program Services  
Office of Research

# Sponsored Program Services (SPS)



## Sponsored Program Services

[Home](#) [General](#) [Directory](#) [Pre-Award](#) [Post Award](#) [Contracting](#) [Data](#) [Quality Assurance](#) [PERA](#) [Office of Research](#) [PRF](#)



### Resources

### Feedback

#### Pre-Award

- [Proposal Initiation](#)
- [Proposal Preparation](#)
- [Pre-Award FAQ's](#)
- [Institutional Information](#)

#### Contracting

- [Contracting Office](#)
- [Request Service](#)
- [Contracting 101](#)
- [Industry Models](#)

#### Research Quality Assurance

- [Internal Controls Reference Guide](#)
- [Hot Topics in Research Administration](#)

#### Post Award

- [SPS Handbook/Guidelines](#)
- [Faculty Resources](#)
- [Business & Regional Offices](#)
- [SAP Budget Templates](#)

#### Data

- [Awards/Expenditures/Trends](#)
- [Data Requests](#)
- [Data Digest](#)
- [College/Dept Inquiry](#)

[Disclosure and Reporting Requirements](#)

[Flexible IP Contracting Models](#)

[Intellectual Property](#)

[Facilities & Administration](#)

[Subrecipient Monitoring](#)

[Uniform Guidance](#)

## Sponsored Program Services

SPS is a collaboration between the Executive Vice President for Research and the Treasurer/Chief Financial Officer. Responsibilities include Proposal Development, Award Management, Contract Negotiation, Research Administration, Quality Assurance, Intellectual Property Management, Data and Support Services.

### Headlines

[Updates from Federal Funding Agencies](#) \*\*\*NEW\*\*\*

[Faculty Enhanced Research Appointment Program-FERAP Pilot Renewed for Year 3](#) \*\*\*NEW\*\*\*

[Research Account Dashboard - RAD is now available](#)

[New and Improved Research Administration System - PERA](#)

[Post Award Team Contacts](#) - [SPS Post Award Roles and Responsibilities](#)

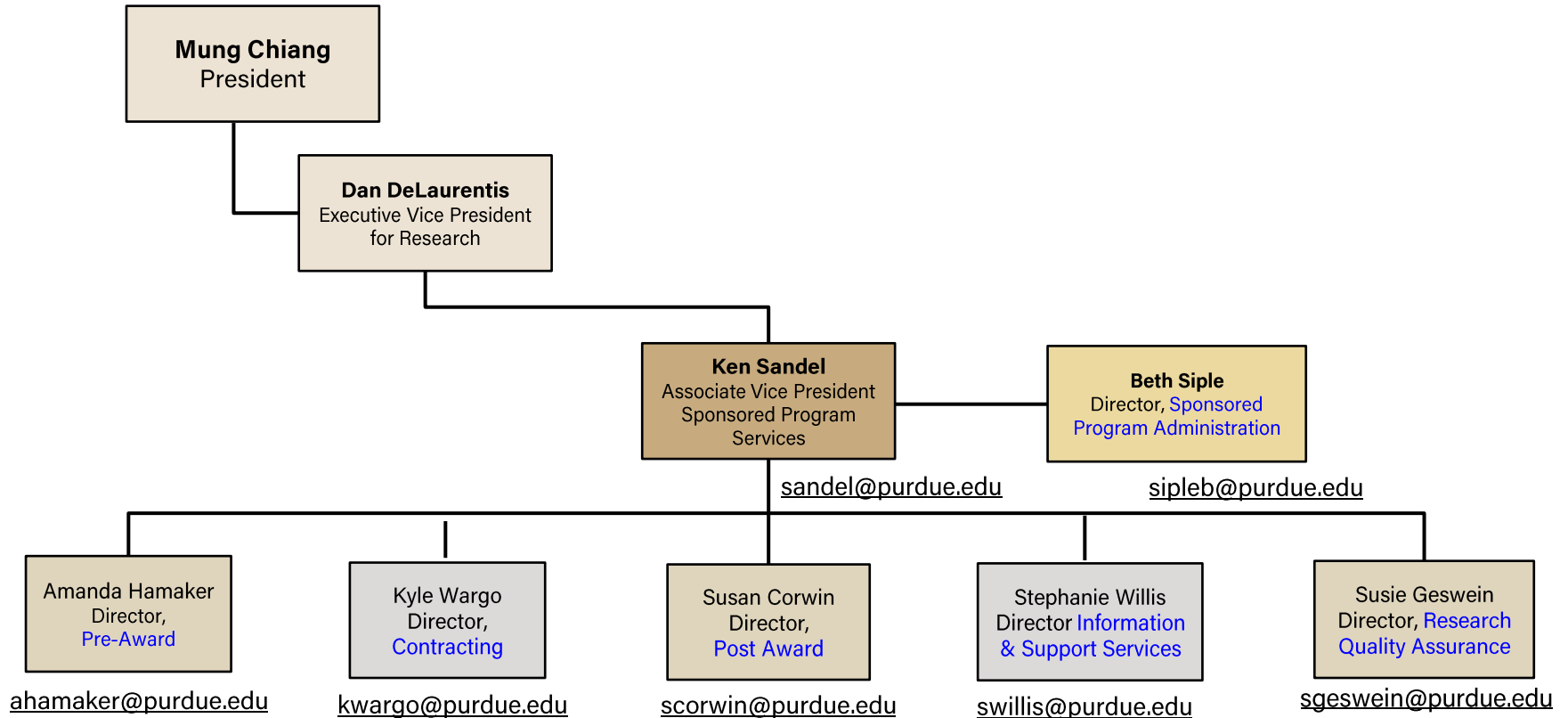
[Current and Pending Request](#)

# Sponsored Program Services – [www.purdue.edu/SPS](http://www.purdue.edu/SPS)

# Office of Research - Sponsored Program Services Leadership

All Staff Directory - Sponsored Program Services -

<https://www.purdue.edu/business/sps/general/allspstaff.html>



# *Pre-Award Services*

## **Provides support for proposal submission activities for all faculty within all academic areas**

- Review sponsor guidelines, identify key requirements
- Assist with budget preparation, related documentation and proposal submission forms
- Prepare required sponsor administrative forms
- Ensure that all Purdue information included within the proposal is accurate and complete
- Contact and collaborate with partner institutions to secure all necessary subcontract documentation
- Assure all regulatory requirements and export control issues are identified
- Review the final proposal package to ensure all administrative requirements have been met
- Obtain academic approvals and provide institutional approval for the proposal
- Complete the final submission package, upload final documents and forms, and submit to the sponsor

Pre-Award Email: [proposal@purdue.edu](mailto:proposal@purdue.edu)

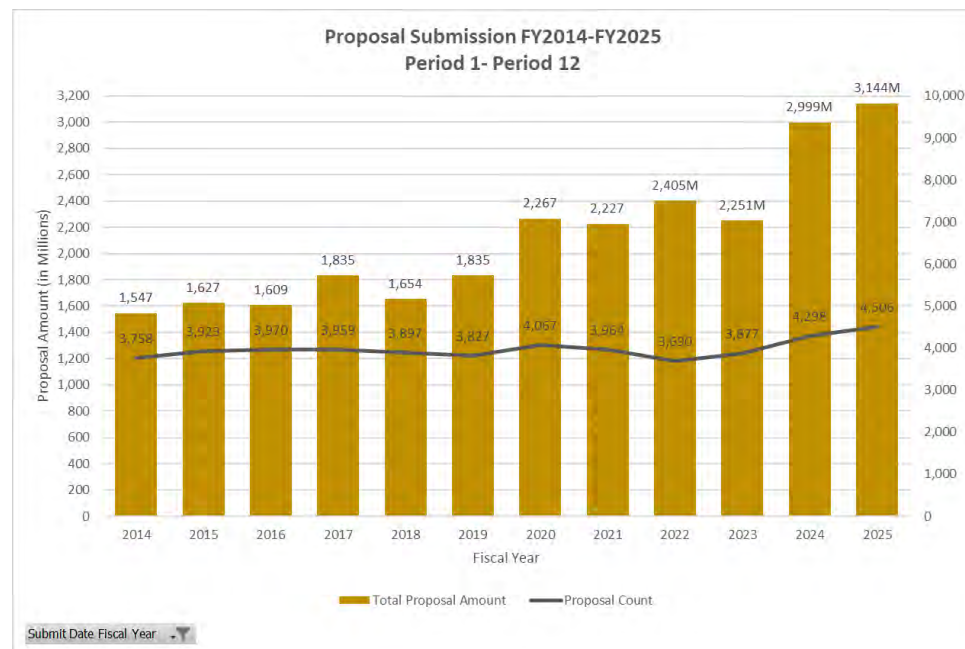
# Proposal Processing Deadlines- SPS Guidance



Proposal Deadline Stages	Due to Pre-Award
1. <b>Initiation Stage</b> <a href="https://pera.research.purdue.edu/">https://pera.research.purdue.edu/</a>	3 weeks (15 business days) in advance
2. <b>Admin Stage</b> (Non-Scientific Documents)	1 week (5 business days) in advance
3. <b>Science Stage</b> (Scientific Documents)	2 business days (16 hours) in advance
Anything received after the stated number of days prior to the sponsor deadline or desired submission date will require completion and approval of an exemption form in order to be able to submit. Any sponsor deadline after 5:00pm should be considered due at 5:00pm.	

# Proposals By Sponsor – FY 2025 and 12 Year Trend

	FY2025 (Jul2024-Jun2025)	
	Proposal Count	Proposal Amount
<b>U.S. Federal Government</b>		
Dept. Of Health And Human Services	720	977,050,357
National Science Foundation	809	570,156,939
Dept. Of Defense	340	415,518,097
PARI	15	26,322,376
Dept. Of Energy	263	260,443,960
Dept. Of Commerce	48	147,081,958
Dept. Of Agriculture	274	107,954,523
National Aeronautics And Space Admin	156	101,435,945
Environmental Protection Agency	13	34,797,880
Dept. Of Education	25	26,701,017
Dept. Of Transportation	48	15,328,323
Agency For International Development	17	8,247,485
PARI	4	2,122,795
Dept. Of Interior	17	2,702,302
Other Federal	77	82,749,910
PARI	5	5,395,794
<b>Total U.S. Federal Government</b>	<b>2,834</b>	<b>2,785,205,383</b>
State and Local Government	245	51,341,901
Business	502	99,919,193
PARI	18	13,937,337
Nonprofit Organizations	744	171,035,704
PARI	6	1,624,418
Institutional Funds	9	389,027
PARI	11	354,879
All Other Sources	137	20,063,681
PARI	1	416,554
<b>Total Non-Federal</b>	<b>1,672</b>	<b>359,082,694</b>
<b>Grand Total</b>	<b>4,506</b>	<b>3,144,288,078</b>
<b>Total Purdue System-Wide</b>	<b>4,446</b>	<b>3,094,113,925</b>
<b>Total Purdue Applied Research Institute</b>	<b>60</b>	<b>50,174,153</b>



*Proposals FY 2025 = \$3,144,288,078 up 5%*

*WL Proposals FY 2025 = \$3,044,758,302 up 4%*



# *Contracting Services*

## Negotiates and processes all contracts associated with sponsored programs

- Funding Agreements (Federal, State, Industrial/Non-profit)
- Confidentiality Agreements (NDA's, CDA's)
- Material Transfer Agreements (MTA's)
- Equipment Transfer/Loan Agreements
- Miscellaneous Agreements (MOU, LOI, LOA's, Etc.)
- Identify terms not matching proposal (project term, deliverables, etc.)
- Ensure export control review is complete
- Identify contractual terms **not** in compliance with University policy, federal requirements, state requirements, and state and federal law
- Present redline to sponsor and negotiate

# *Post Award Services*

**Provides support for all sponsored awards through dedicated award set-up, subcontracting, billing and account management teams**

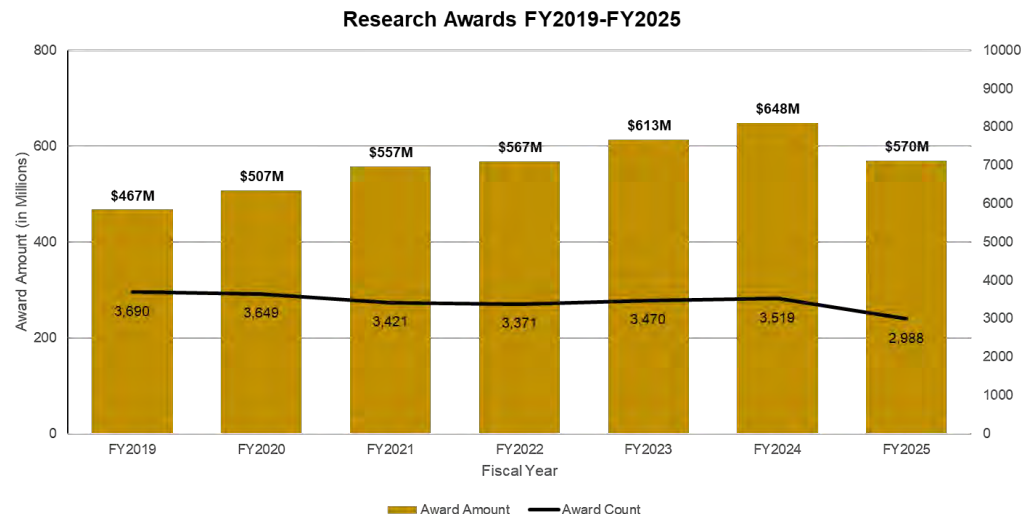
- Serve as resource for faculty, researchers, and business offices
- Provide guidance on sponsor specific guidelines and regulations
- Review award document for requirements and highlight key issues for faculty and business offices
- Work with partnering institutions to secure all subcontract documentation
- Prepare and submit financial and property reports
- Assist with electronic submission of technical reports

Post Award Email: [spsacctmgmt@purdue.edu](mailto:spsacctmgmt@purdue.edu)



# Research Awards By Sponsor – FY 2025 and 12-Year Trend

		FY2025 (Jul2024-Jun2025)	
		Award Count	Research Award Amount
<b>U.S. Federal Government</b>			
Dept. Of Defense		347	106,970,512
	PARI	5	2,165,638
Dept. Of Health And Human Services		410	86,765,435
National Science Foundation		280	82,020,562
	PARI	0	0
Dept. Of Energy		212	57,546,039
	PARI	6	1,134,871
Dept. Of Agriculture		149	26,111,964
National Aeronautics And Space Admin		126	14,916,297
Dept. Of Commerce		27	14,276,115
	PARI	0	0
Agency For International Development		14	6,243,631
	PARI	9	934,510
Dept. Of Interior		24	3,046,854
Dept. Of Transportation		16	2,770,430
State, U.S. Department Of		3	1,243,109
Environmental Protection Agency		6	1,095,979
Dept. Of Education		6	705,837
Dept. Of Homeland Security		0	0
Nuclear Regulatory Commission		0	0
Other Federal		29	4,288,110
	PARI	0	0
<b>Total U.S. Federal Government</b>		<b>1,669</b>	<b>\$412,235,892</b>
State and Local Government		235	48,319,516
Business		574	63,392,281
	PARI	9	826,417
Nonprofit Organizations		341	25,977,131
Institutional Funds		0	0
	PARI	9	34,424
All Other Sources		150	18,494,639
	PARI	1	416,554
<b>Total Non-Federal</b>		<b>1,319</b>	<b>\$157,460,961</b>
<b>Grand Total</b>		<b>2,988</b>	<b>\$569,696,853</b>
<b>Total Purdue System-Wide</b>		<b>2,949</b>	<b>\$564,184,439</b>
<b>Total Purdue Applied Research Institute</b>		<b>38</b>	<b>\$5,512,414</b>

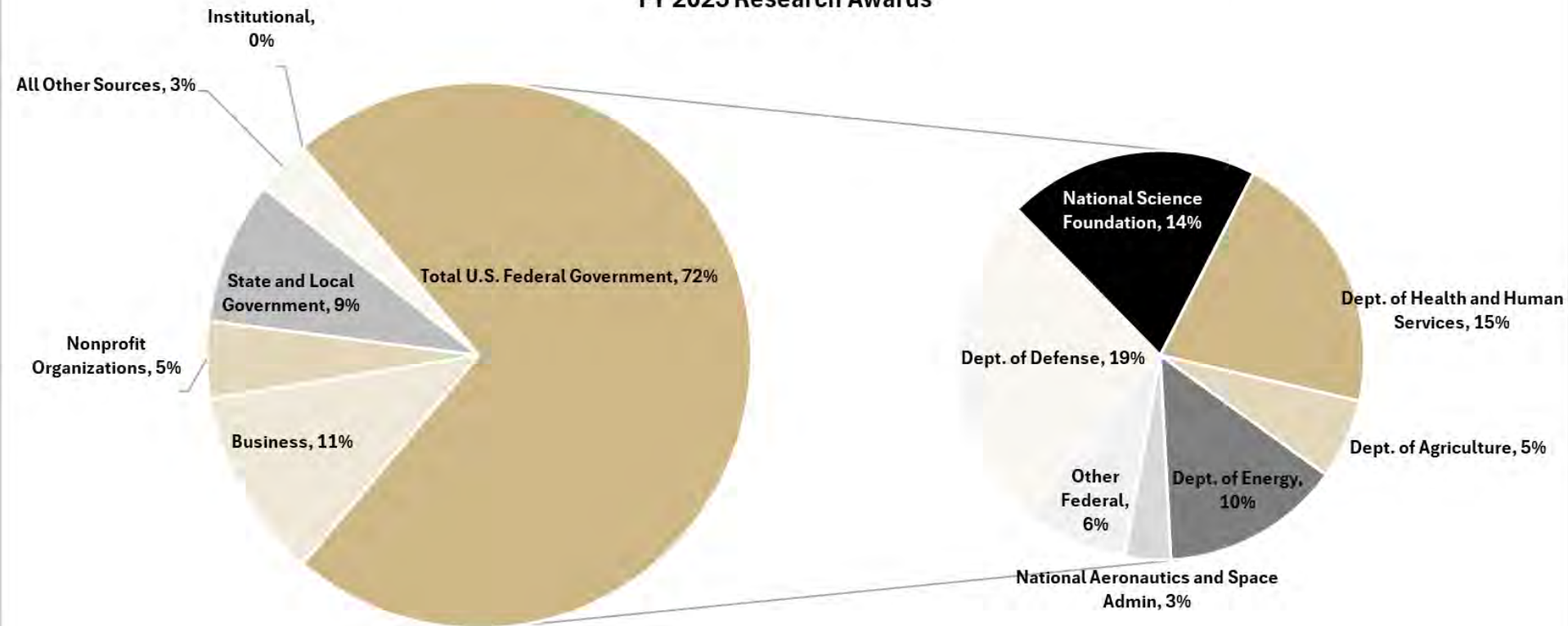


*Research Awards FY 2025 = \$569,696,853 down 12%*  
*WL Research Awards FY 2025 = \$547,584,336 down 12%*

# Research Portfolio and Annual Awards FY 2025

**Purdue has a diversified \$2.8B research funding portfolio**

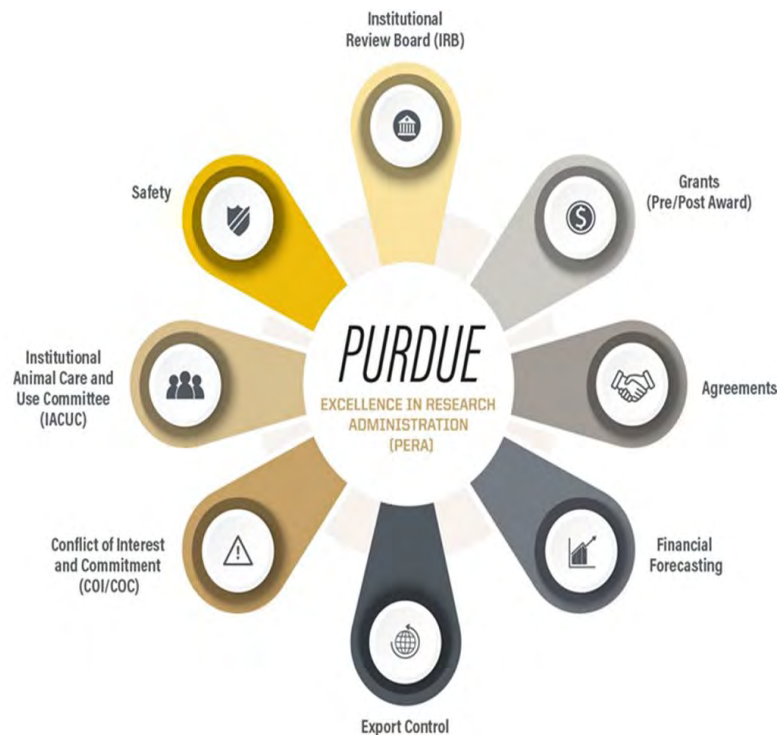
FY 2025 Research Awards



# ***PERA: Purdue Excellence in Research Administration***

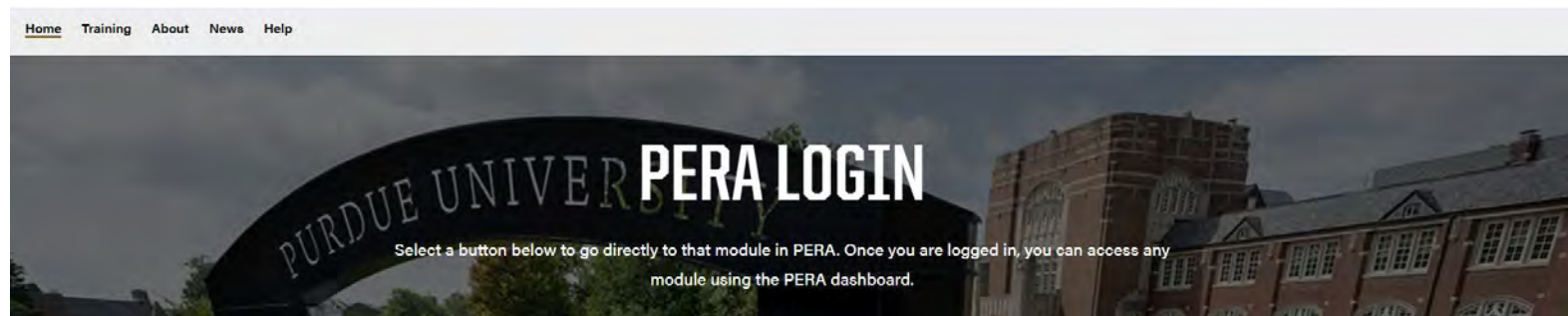
## **Module Implementation Timeline**

<b>Module</b>	<b>Go-Live Date</b>
Grants and Agreements	Live October 2024
IACUC	Live October 2024
IBC/Safety	Live March 2025
Conflict of Commitment	Live August 2025
Export Control (Agreements)	September 4, 2025
Conflict of Interest	October 27, 2025
IRB	October 27, 2025



# *PERA: Purdue Excellence in Research Administration*

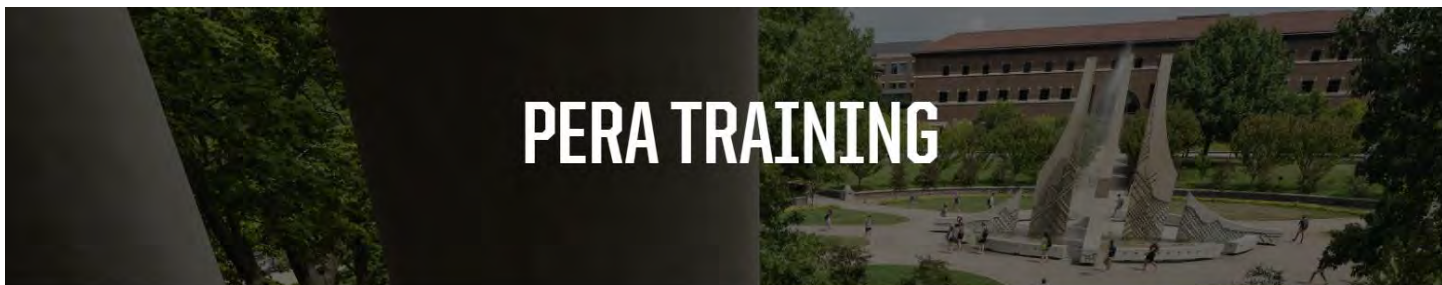
<https://pera.research.purdue.edu/>



<b>Grants Module</b>  Utilize to create, edit, and submit a proposal. Access award documents and information, including Just-in-Time.  <a href="#">LOGIN →</a>	<b>Agreements Module</b>  Initiate, edit, and track funded or unfunded sponsored agreements and contracts.  <a href="#">LOGIN →</a>	<b>IACUC Module</b>  (Institutional Animal Care and Use Committee) Create a protocol for the use of animals in research and submit to the IACUC for review.  <a href="#">LOGIN →</a>
<b>Research Account Dashboard</b>  Access your current portfolio of grants and faculty allocation accounts, including total budget, expenditures, commitments and available balances.  <a href="#">LOGIN →</a>	<b>Safety-IBC Module</b>  Allows researchers to create a protocol for the use of biohazardous materials in research and submit to the Institutional Biosafety Committee for review.  <a href="#">LOGIN →</a>	<b>Conflict of Interest / Conflict of Commitment Module</b>  Allows faculty and exempt staff to submit Reportable Outside Activity pre-approval requests, update Disclosure Profile, complete Annual Training and Certification of Compliance  <a href="#">LOGIN →</a>

# PERA: Purdue Excellence in Research Administration

<https://pera.research.purdue.edu/training/>



## Welcome to PERA Training

PERA Training Resources includes step-by-step procedure guides, infographics, and videos organized by role and step in the research and compliance lifecycle (shown below).

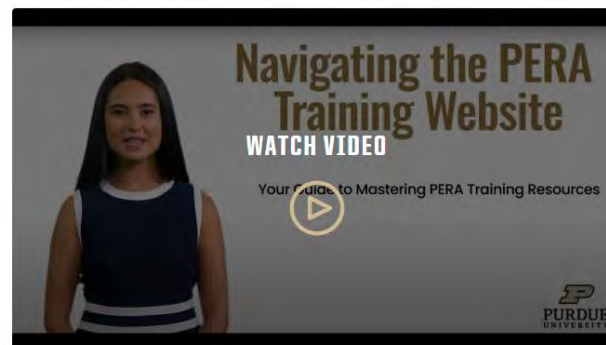
### Select Your Role

Select your role to view relevant training resources.

INVESTIGATOR →

OTHER →

*Other includes Pre-award and Pre-award Support Staff, Post Award and Finance Research Administration Staff, Research Quality Assurance, IACUC Research/Compliance Admin Staff, and IACUC committee members.*



View the brief overview video to learn about site navigation and available resources.

FREQUENTLY ASKED QUESTIONS →

PERA HELP →

9/3/2025 13





## Additional Questions?

### **PERA Support:**

- Email: [perahelp@purdue.edu](mailto:perahelp@purdue.edu)
- Call: 765-494-6555
- Submit Support Tickets

<https://pera.research.purdue.edu/help/>

[perahelp@purdue.edu](mailto:perahelp@purdue.edu)

***THANK YOU***

***QUESTIONS?***