

# STAFF LUNCH & LEARN

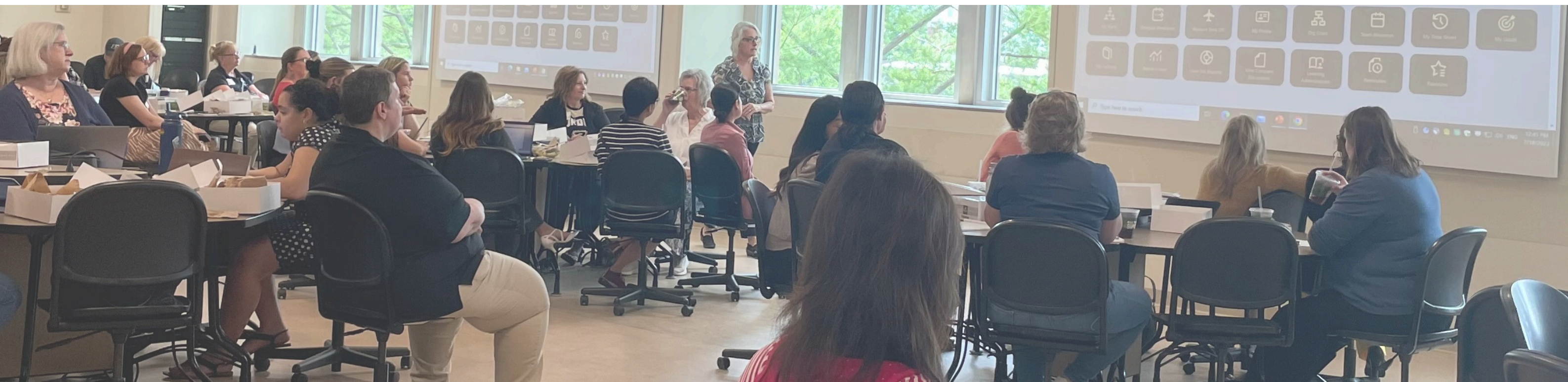
**Growing into a Position to Lead**

**Co-sponsors:**

MaPSAC

CCSAC

Purdue HR



**How you can see yourself as a leader**

**How to take advantage of resources and opportunities for growth available at Purdue**

**What steps to take to grow as a leader**



# STAFF LUNCH & LEARN

## Growing into a Position to Lead

### SPEAKER BIOS



**Amy Boyle** – *Vice President for Human Resources at Purdue University*

Amy Boyle became Purdue University's Vice President for Human Resources on December 1, 2023, after serving in the interim role since July. She is the first woman to hold this position at Purdue, succeeding Bill Bell. Boyle brings over 20 years of HR experience at Purdue, including roles in recruitment, compensation, and employee relations. As the former Associate Vice President for Talent, she ensured Purdue's excellence in talent management. Known for uniting teams and strategic leadership, she led key HR integrations and initiatives. Boyle holds a bachelor's in organizational leadership from Purdue West Lafayette and an MBA from Purdue Global.



**Eva M. Nodine** – *Vice President, Deputy Chief Financial Officer, Assistant Treasurer*

Eva Nodine became Purdue University's Vice President and Deputy Chief Financial Officer on September 16, 2021. Nodine serves as Assistant Treasurer of the Purdue Board of Trustees, as approved on August 5, 2022. Nodine also serves as the Chief Financial Officer and Chief Operating Officer for Purdue Global, as approved on May 16, 2024. Nodine has led numerous strategic initiatives, including Purdue University's financial system and process transformation, overhaul of cash management, forecasting, and investment strategy. In addition, Nodine led the modernization of fiscal planning, modeling, and analysis for Purdue University. Prior to her current roles, Nodine served as the Senior Director of Financial Planning and Analysis, Director of the General Ledger Transformation, and the Director of Benefits within Purdue University. Prior to Purdue University, Nodine worked in public accounting where she practiced not-for-profit auditing and business tax. Nodine graduated from Purdue University in May 2018 with Master's in Business Administration and holds a Bachelor's in Accounting and Forensic Accounting. Nodine is a Certified Public Accountant in Indiana, having earned her CPA License in 2008.



**Adedayo Adeniyi** – *Director of Leadership & Organizational Development, Human Resources*

Adedayo Adeniyi serves as the Senior Director of Leadership and Organizational Development for Purdue University and is a member of the HR Leadership Team. He leads the university's succession planning, performance and goals management, and leadership and management development systems. He holds a Bachelor of Science degree in business administration and a Master of Public Administration degree. Adedayo has earned advanced-level certifications in human resources, project management, six-sigma, change management, and executive coaching in addition to other professional designations. Adedayo has served in various senior HR leadership and organizational development roles for over 30 years.



**Sharon Franks** – *Executive Assistant to the Department Head, Department of Psychological Sciences*

Sharon Franks is the Executive Assistant to the Department Head of Psychological Sciences. Before joining Purdue and the Psychological Sciences Business office in 2017, she worked as a Reading Interventionist for Tippecanoe County School Corporation and coached girls' basketball at the middle and high school level. Sharon joined the Psychological Sciences main office in 2022 after a short term in Sponsored Program Services as a Pre-Award Specialist. She was a member of the 41st class of ACE (Accomplished Clerical Excellence Program). Sharon has received the Psychological Sciences Mickey Gilbert Award for recognition of exceptional work in 2018 and 2023. She received her B.A in Speech and Hearing Science at The Ohio State University where she was a member of the Women's Basketball Team.



# STAFF LUNCH & LEARN

Growing into a Position to Lead

## SPEAKER BIOS



**Kristyn Jewell** - *Director of Interdisciplinary Research Administration, Office of Research*

Kristyn Jewell serves as Director of Interdisciplinary Research Administration within the Office of Research. She has worked at Purdue for nearly 18 years in varying roles within a departmental business office, Sponsored Program Services Pre-Award, and the Office of Research. Her current role within the Strategic Interdisciplinary Research division includes responsibility over the university's cost sharing and institutional support for sponsored awards. She oversees multiple internal funding programs providing research funding to faculty members. Additionally, she co-leads the Strategic Interdisciplinary Research Pre-Award team housed within SPS focused on providing strategic, coordinated efforts to support proposal development and preparation for large submissions averaging \$10-\$100M in external funding.



**Dr. Jacquelyn Thomas-Miller** - *Director of Advising and Retention in the College of Education*

Dr. Jackie has been an active member of Purdue University since 2015. She was the 2023-24 Chair of the MaPSAC Professional Development Subcommittee and has committed to serve in 2024-25 as an Emeritus Member. Dr. Jackie is a purposeful educational leader whose foundation was abundantly fulfilled as a former public-school administrator and special education teacher at the elementary and high school level. She is very intentional about utilizing her top strengths: Strategic, Maximizer, Learner, Connectedness, and Input in all aspects of her life.



**Sang Eun Woo** - *Director of the Butler Center for Leadership Excellence and Professor of Psychological Sciences*

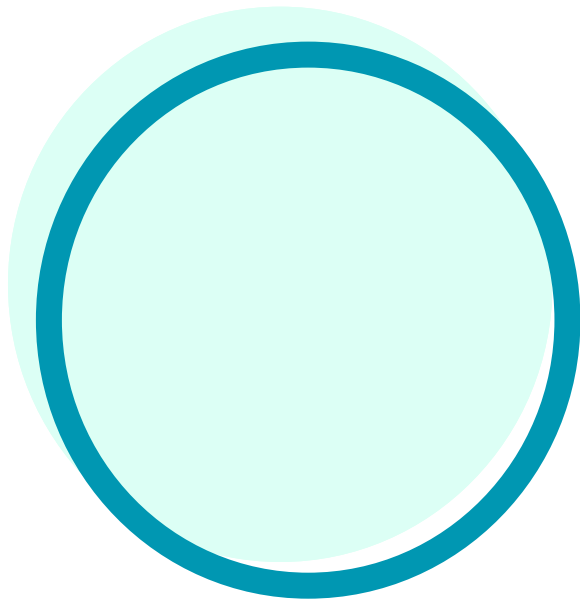
Sang Eun Woo is a Professor of Industrial-Organizational Psychology in the Department of Psychological Sciences at Purdue University. Dr. Woo's substantive research so far has focused on how people's personality and motivation can help explain various psychological phenomena in the workplace. Particular outcomes of interest include work attitudes, withdrawal behaviors, and interpersonal relationships. Sang's overall research program is motivated by her desire to understand, harness, and/or foster openness in academia as well as the rest of the world. As the director of the Butler Center, Sang enjoys utilizing her scientific expertise and professional experience to develop and support women academic leadership at Purdue.

# STAFF LUNCH & LEARN

## Growing into a Position to Lead

### NOTES

What is still circling around in your head? What is unresolved?



---

---

---

---

What is squared away? What ideas have been confirmed as true to you?



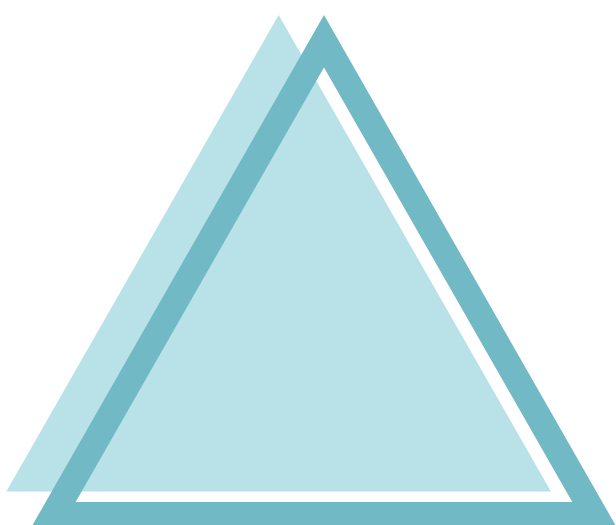
---

---

---

---

Which 3 takeaways could you use in your personal or work life?



---

---

---

---