

# ENVIRONMENTAL HEALTH AND SAFETY

## CONSTRUCTION SAFETY, ABATEMENT AND REMEDIATION

### *FLOOD SAFETY ON THE JOBSITE*



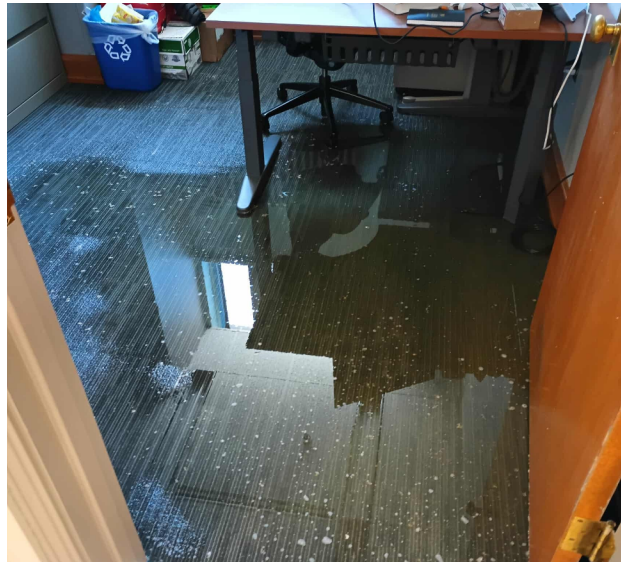
#### What to Know if Water Invades Your Workplace

Floods can cause significant disruption to daily operations and always occur without warning. Professional cleanup and remediation are required in every case. If you encounter flooding, follow these steps:

- **Call 911 immediately.** Any amount of flooding is considered an emergency. Reporting the incident ensures an official record is created.
- **Avoid the area.** Floodwaters can create electrical hazards and lead to serious injury.
- **Understand the hidden risks.** Beyond visible water, Purdue's remediation team must inspect walls, ceilings and floors for hidden moisture that requires specialized cleanup.
- **Be aware of long-term impacts.** Flooding can promote fungal growth and may require emergency repairs that extend the time a space must remain closed.

Once all water damage has been addressed and the area is safe, the workspace will be returned to occupants.

Your cooperation helps Purdue maintain a safe campus while minimizing disruptions.



Administrative Operations

765-494-1019 • [rmtyson@purdue.edu](mailto:rmtyson@purdue.edu)