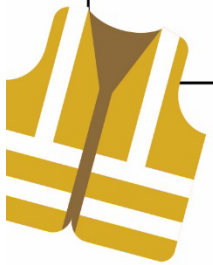


UNIVERSITY SAFETY BINGO



I O S H A

<p>Show proper clean work setting</p>	<p>Locate right to know poster</p>	<p>Wear appropriate PPE</p>	<p>Report a safety hazard</p>	<p>Identify emergency exit</p>
<p>Locate a safety door sign</p>	<p>Demonstrate a safety drill</p>	<p>Review a safety data sheet</p>	<p>Locate a fire extinguisher</p>	<p>Show proper lifting techniques</p>
<p>Wear OSHA standard 1910.128</p>	<p>Show inspected Purdue vehicle</p>	<p>FREE SPACE</p>	<p>List your building's emergency contacts</p>	<p>Take a picture of building escape route</p>
<p>Take a picture with a safety professional</p>	<p>Show proper 3 points of contact</p>	<p>Use handrails on stairs</p>	<p>Obtain Purdue SLAM card</p>	<p>Labeled chemical container</p>
<p>Have 5 people look alike</p>	<p>Identify eye wash/shower station</p>	<p>Show clear path to electrical panel</p>	<p>Show copy of emergency building plan</p>	<p>Identify unobscured sprinkler head</p>



Bingo Points Guidelines

Section I Down

- Picture of a clean workspace, with a person sitting at a desk in a proper position
- Take picture of a Safety Door Sign/Posting Ex.
- Take a picture with proper hand protection on - *29 CFR 1910.138*
- Take a picture with a safety professional (cardboard cutout will be located in HAMP)
- 5 committee members dressed alike (ex. jeans and white tee shirts)

Section O

- Take a picture of OSHA Right to Know and IOSHA Poster
- At least two people in a picture acting in a Safety Drill (ex. fire demonstration of EER, tornado/wind drill, etc.)
- Picture of a clean and inspected university vehicle, with paper inspection shown in hand
- Show the proper use of a 3-point contact on a step ladder
- Identify eye wash/safety shower station, take a picture near it with two members of the committee

Section S

- Take a picture of yourself and two others wearing the appropriate PPE for your workspace.
- Take a picture of yourself or of others reading and going over the Safety Data Sheet
- FREE SPACE
- Take a picture of you or a committee member using handrails on stair
- Take a picture of an unobstructed path to an electrical panel/shut off switch (Minimum clearance of 36" in front of electrical panels, disconnects and switch boards) - *29 CFR 1910.303*

Section H

- Submit a safety concern using the EHS Website
- Locate a fire extinguisher and take a picture with the sign/fire extinguisher in the background
- Write a list of your buildings' Emergency Contacts: Name, number and email (from building's Building Emergency Plan (BEP))
- Take a picture of two members in your committee with their SLAM cards
- Send a copy of the [Building Emergency Plan](#) to FacOccSafety@groups.purdue.edu - *29 CFR 1910.38*

Section A

- A picture of someone standing underneath an Exit Sign
- Take a picture of a committee member lifting a box in a proper lifting technique or two people lifting a box
- Take a picture of your building escape route, located in the BEP
- Take a picture of a correctly labeled chemical container
- Take a picture of an unobscured sprinkler head, (materials stored 2' below the ceiling in non-sprinkled areas and 18" below sprinkler head deflectors in sprinkler areas of buildings) - *29 CFR 1910.159*

Point System

I Down: 40 points

O Down: 40 points

S Down: 30 points

H Down: 40 points

A Down: 40 points

IOSHA Row 1: 40 points

IOSHA Row 2: 40 points

IOSHA Row 3: 30 points

IOSHA Row 4: 40 points

IOSHA Row 5: 40 points

IOSHA Diagonal: 30 points

AHSOI Diagonal: 30 points

Whole BINGO Card: 250 points