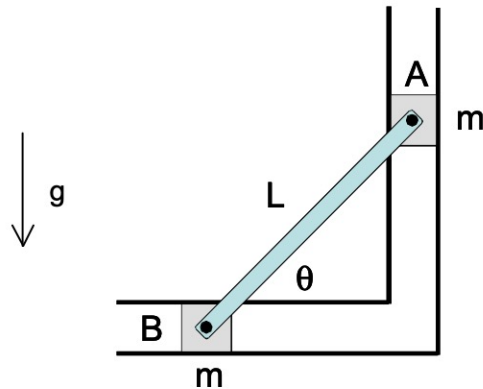


**Homework H.4.H**

**Given:** The mechanism shown below, consisting of two blocks A and B and a massless bar, is released from rest in the configuration shown.

**Find:** Determine the speed of block A when it reaches the bottom of the slot.



Use the following parameters in your analysis:  $m = 6 \text{ kg}$ ,  $\theta = 53.13^\circ$  and  $L = 2 \text{ m}$ .