

The **vena cava** is a large vein that carries de-oxygenated blood to the heart from the body (see Figure 1).

- The **inferior vena cava** (IVC) carries blood from the lower body.
- The **superior vena cava** carries blood from the head, arms, and upper body.

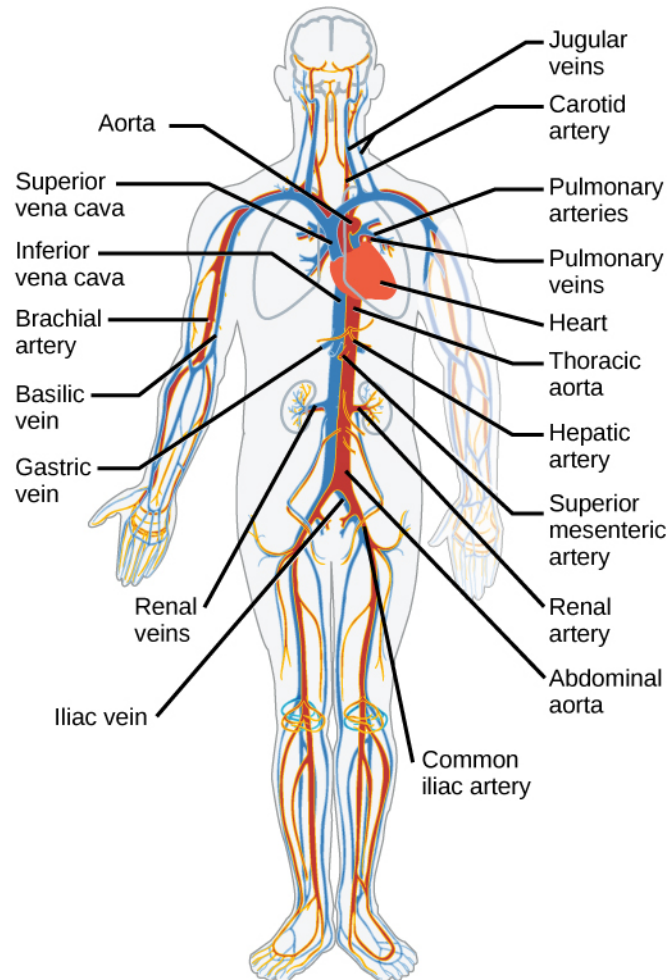


Figure 1: Circulatory system.

An **IVC filter** is a small device that can stop blood clots from going up into the lungs.

IVC filters<sup>1</sup> are available from a multitude of medical device manufacturers and in a variety of designs (see Figure 2).

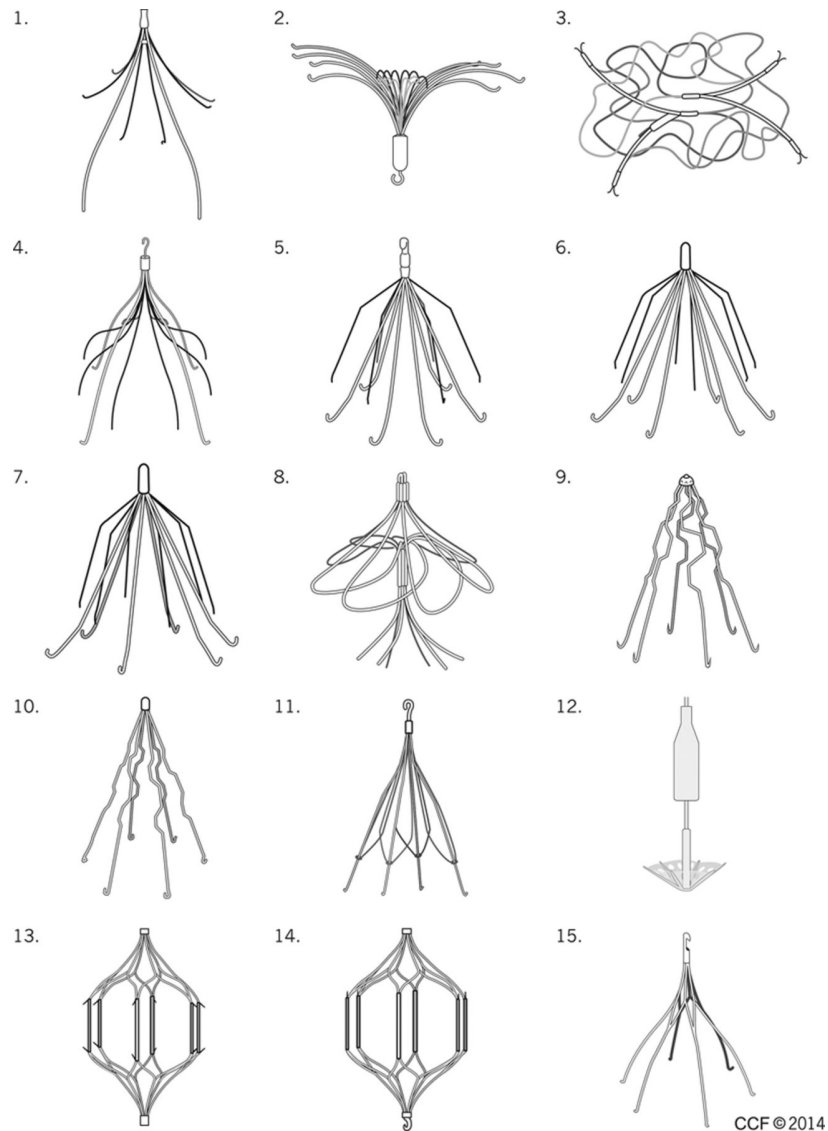


Figure 2: IVC filters: (1) ALN filter; (2) Amplatz filter; (3) Bird's Nest filter; (4) Celec filter; (5) Eclipse filter; (6) G2 filter; (7) Recovery filter; (8) Simon Nitinol filter; (9) Greenfield filter (stainless steel); (10) Greenfield filter (titanium); (11) Gunther Tulip filter; (12) Mobin-Uddin filter; (13) TrapEase filter; (14) OptEase filter; and (15) Option filter.

<sup>1</sup><https://doi.org/10.1161/CIRCULATIONAHA.115.016468>