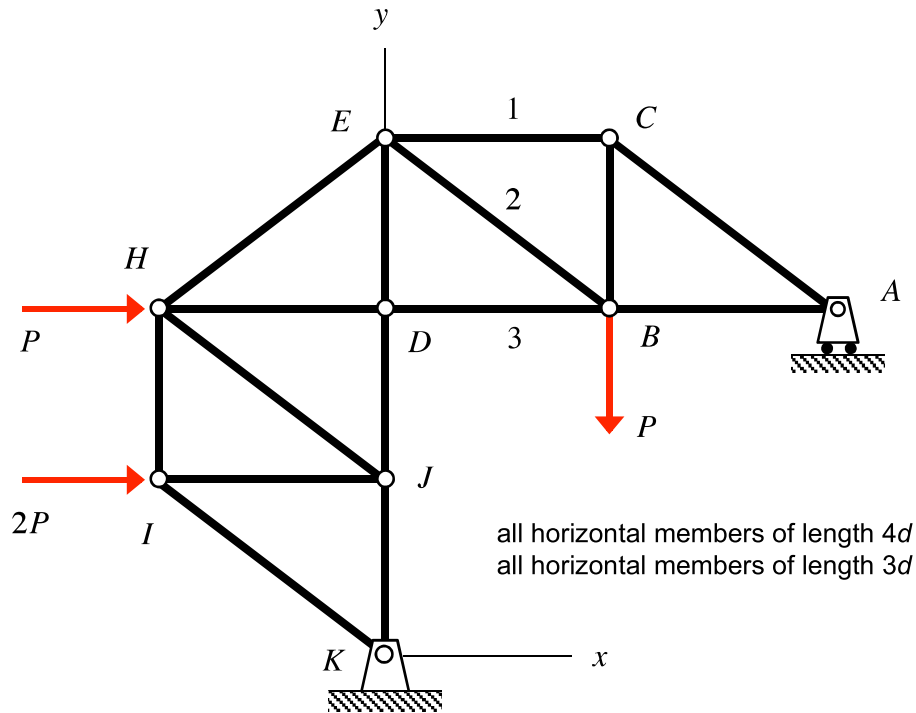


**Homework H22.A**

**Given:** Consider the truss shown below with the loading on joints B, I and H.

**Find:** Determine the load carried members 1, 2 and 3. Identify each member as either being in tension, in compression or carrying zero load. Leave your answers in terms of  $P$ .



**Homework H22.B**

**Given:** Consider the truss shown below with the loading on joints D, E, I and H, in addition to the loading due to the weight  $W$  of the block that is supported by the cable-pulley system shown, where  $W = 2P$ .

**Find:** Determine the load carried members 1, 2 and 3. Identify each member as either being in tension, in compression or carrying zero load. Leave your answers in terms of  $P$ .

