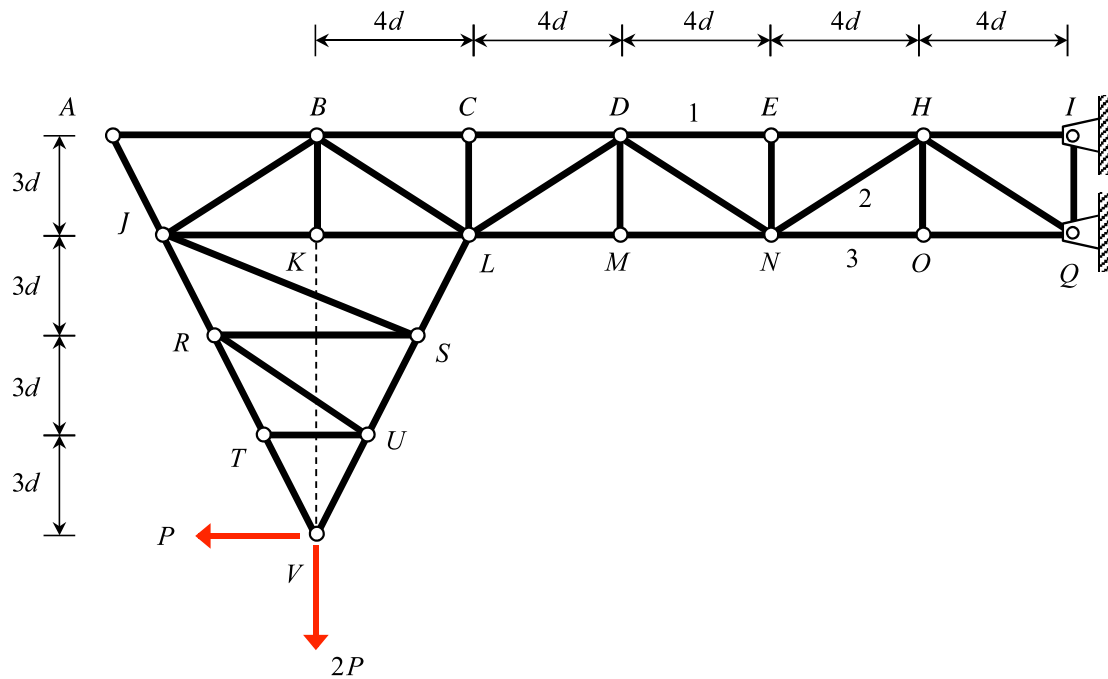


Homework H23.A

Given: Consider the truss shown below with the loading on joint V.

Find: For this problem:

- Identify all zero-force members in the truss.
- Determine the load carried by members 1, 2 and 3 of the truss. Identify each member as either being in tension, in compression or carrying zero load. Leave your answers in terms of P .



Homework H23.B

Given: Consider the truss shown below with the loading on joint V.

Find: For this problem:

- a) Identify all zero-force members in the truss.
- b) Determine the load carried by members HJ, HK, HI and EI of the truss. Identify each member as either being in tension, in compression or carrying zero load.. Leave your answers in terms of P .

