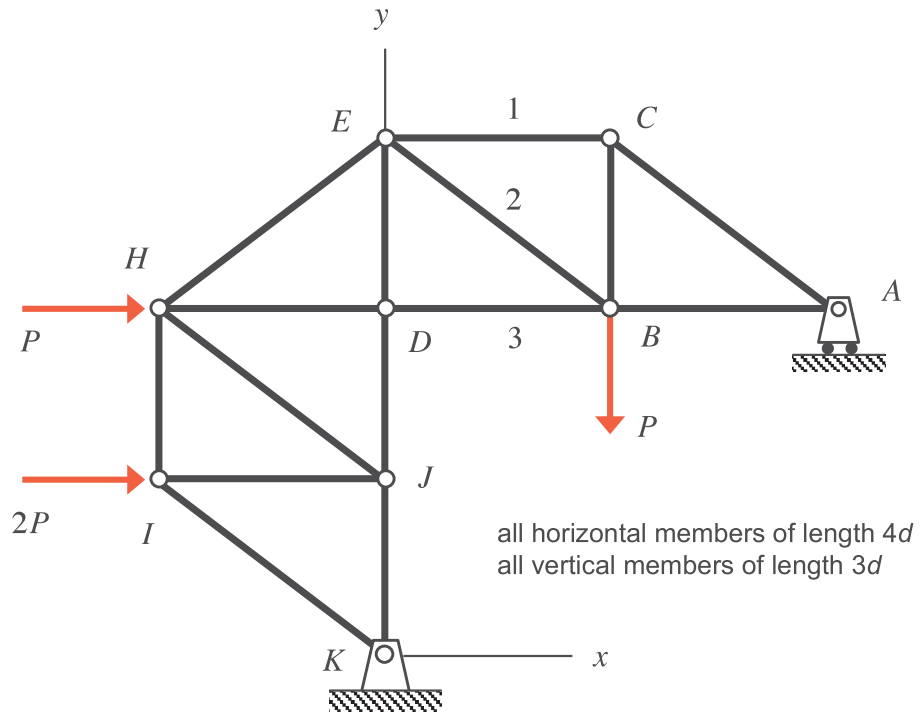


Homework H22.A

Given: Consider the truss shown below with the loading on joints B, I and H.

Find: Determine the load carried by members 1, 2 and 3. Identify each member as either being in tension, in compression or carrying zero load. Leave your answers in terms of P .



Homework H22.B

Given: Consider the truss shown below with the loading on joints D, E, I and N, in addition to the loading due to the weight W of the block that is supported by the cable-pulley system shown, where $W = 2P$.

Find: Determine the load carried by members 1, 2 and 3. Identify each member as either being in tension, in compression or carrying zero load. Leave your answers in terms of P .

