

# MaPSAC 2025-2026 Directory



**Eric Adams, Chairperson**  
[ewa@purdue.edu](mailto:ewa@purdue.edu)  
*Senior Operations Manager, User Support, IT Research Computing*

**Member Area:** Vice President for Information Technology  
**Term:** 6/22-5/25  
**Subcommittees:** Executive (Chair), Membership & Communication, University Senate



**Amanda Hassenplug, Vice Chairperson**  
[ahassenp@purdue.edu](mailto:ahassenp@purdue.edu)  
*Senior Research Operations Administrator, Rosen Center for Advanced Computing*

**Member Area:** Vice President for Information Technology  
**Term:** 10/24-5/27  
**Subcommittees:** Executive (Vice Chair), Membership & Communication, University Senate (secondary)



**Leslie Martin**  
[lmartin@purdue.edu](mailto:lmartin@purdue.edu)  
*Assistant Dean of Administration, Veterinary Medicine*

**Member Area:** Treasurer & CIO, Vice President & Assistant Treasurer, Vice President for HR  
**Term:** 6/23-5/26  
**Subcommittees:** Executive (Secretary), Compensation & Benefits, University Senate: Faculty Compensation & Benefits



**Harley Barta**  
[hbarta@purdue.edu](mailto:hbarta@purdue.edu)  
*Student Success Specialist, Construction Management Technology*

**Member Area:**  
**Term:** 6/25-5/28  
**Subcommittees:** TBA



**Brian Bienz**  
[brian.bienz@pfw.edu](mailto:brian.bienz@pfw.edu)  
*Assistant Director, Athletic Compliance*

**Member Area:** Purdue Fort Wayne  
**Term:** 10/24 – 5/27  
**Subcommittee:** Regional Campus Secondary Member



**Dennis Bowling**  
[bowlingd@purdue.edu](mailto:bowlingd@purdue.edu)  
*Senior Associate Director, Student Success Programs*

**Member Area:** Office of the President, Areas reporting to the Provost, Exec VP for Strategic Communication, Board of Trustees, Purdue Online  
**Term:** 6/24-5/27  
**Subcommittees:** Comp & Benefits (Vice Chair), Retirement Plan Committee, Service Recognition Ad Hoc (secondary)



**Brittany Cruz**  
[blcruz@purdue.edu](mailto:blcruz@purdue.edu)  
*Online Student Services Specialist, Purdue Online*

**Member Area:** Member Area: Office of the President, Areas reporting to the Provost, Exec VP for Strategic Communication, Board of Trustees, Purdue Online  
**Term:** 8/23-5/26  
**Subcommittees:** Membership & Communication, University Senate: Equity and Diversity Standing Committee



**Lynne Dahmen**  
[ldahmen@purdue.edu](mailto:ldahmen@purdue.edu)  
*Senior Managing Director, Institute for a Sustainable Future*

**Member Area:** Exec VP for Research, Discovery Park  
**Term:** 6/24-5/27  
**Subcommittees:** Professional Development, Survey Oversight Committee





**Amy Deitrich**  
[amymd@purdue.edu](mailto:amymd@purdue.edu)  
*Managing Director, Botany & Plant Pathology*

**Member Area:** Emeritus  
**Term:** 6/25-5/26



**Kelly Dold**  
[kdold@purdue.edu](mailto:kdold@purdue.edu)  
*Marketing & Communication Manager, College of Veterinary Medicine*

**Member Area:** College of Agriculture, Cooperative Extension, College of Veterinary Medicine  
**Term:** 6/23-5/26  
**Subcommittees:** Membership & Communication (Vice Chair), Spring Fling



**Samantha Greulach**  
[sgreulac@purdue.edu](mailto:sgreulac@purdue.edu)  
*Academic Advisor, Ag & Biological Eng Program*

**Member Area:** Agricultural & Biological Engineering  
**Term:** 6/25 – 5/28  
**Subcommittee:** Professional Development



**Tracey Hanton**  
[thanton@pfw.edu](mailto:thanton@pfw.edu)  
*Associate Director, Career Development Center*

**Member Area:** Purdue Fort Wayne  
**Term:** 10/24 – 5/27  
**Subcommittee:** Regional Campus Primary Member



**Misty Hein**  
[mlhein@purdue.edu](mailto:mlhein@purdue.edu)  
*Program Administrator, Purdue Online*

**Member Area:** Emeritus  
**Term:** 6/25-5/26



**Laura Holladay**  
[lhollad@purdue.edu](mailto:lhollad@purdue.edu)  
*Research Security Program Coordinator, Regulatory Affairs*

**Member Area:** At-Large  
**Term:** 8/23-5/26  
**Subcommittees:** Membership & Communication, CSSAC PEAP



**Emily Jones**  
[jone1594@purdue.edu](mailto:jone1594@purdue.edu)  
*Marketing Manager, Student Success Programs*

**Member Area:** Office of the President, Areas reporting to the Provost, Exec VP for Strategic Communication, Board of Trustees, Purdue Online  
**Term:** 6/24-5/27  
**Subcommittees:** Comp & Benefits, Recreation & Wellness Advisory Board, University Senate: Parking & Traffic (secondary)

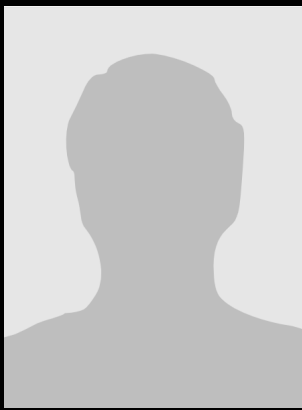


**Mandy Limiac**  
[montgom8@purdue.edu](mailto:montgom8@purdue.edu)  
*Undergraduate Teaching Lab Manager, Agricultural & Biological Engineering*

**Member Area:** College of Agriculture, Cooperative Extension, College of Veterinary Medicine  
**Term:** 6/24-5/27  
**Subcommittees:** Membership & Communication, Service Recognition Program Ad Hoc, College of Engineering Dean's Staff Advisory Council (secondary)







**Simone C Mason**  
[masonsc@pnw.edu](mailto:masonsc@pnw.edu)  
*Clinical Placement Coordinator,  
 College of Nursing*

**Member Area:** Purdue Northwest  
**Term:** 7/25 – 5/28  
**Subcommittee:** Regional Campus  
 Primary Member



**Katie May**  
[may18@purdue.edu](mailto:may18@purdue.edu)  
*Sr Academic Advisor, Pharmacy*

**Member Area:** College of Pharmacy,  
 College of Health & Human Sciences  
**Term:** 6/23-5/26  
**Subcommittees:** Professional  
 Development (Chair), University  
 Senate: Staff Appeals Board for  
 Traffic Regulations (secondary)



**Jessica Perkins**  
[perki161@purdue.edu](mailto:perki161@purdue.edu)  
*Senior Recruitment & Retention  
 Analyst, Minority in Engineering*

**Member Area:** College of  
 Engineering, Purdue Polytechnic  
 Institute, Offices reporting to the  
 Provost  
**Term:** 6/24-5/27  
**Subcommittees:** Professional  
 Development (Vice chair), CoE  
 Dean's Staff Advisory Council,  
 Survey Oversight (secondary)



**Chris Phillips**  
[phill555@purdue.edu](mailto:phill555@purdue.edu)  
*Zones General Manager, Operations  
 & Maintenance*

**Member Area:** Operations &  
 Maintenance  
**Term:** 6/25 – 5/28  
**Subcommittee:** Professional  
 Development



**Jen Schukraft**  
[jmusick@purdue.edu](mailto:jmusick@purdue.edu)  
*Associate Director of Student  
 Services, Krannert Graduate  
 Institute*

**Member Area:** School of Business,  
 College of Liberal Arts, College of  
 Education  
**Term:** 6/24-5/27  
**Subcommittees:** Membership &  
 Communication (Chair), University  
 Senate: Parking & Traffic, Visual  
 Arts & Design (secondary)



**Amanda Taylor**  
[taylo374@purdue.edu](mailto:taylo374@purdue.edu)  
*Executive Assistant to the Head  
 Statistics*

**Member Area:** College of Science  
**Term:** 10/24-5/26  
**Subcommittees:** Membership &  
 Communication, University Senate:  
 Sustainability Committee



**Melissa Taylor**  
[melissataylor@purdue.edu](mailto:melissataylor@purdue.edu)  
*Assistant Director,  
 Office of Research*

**Member Area:** Treasurer & CIO,  
 Vice President & Assistant  
 Treasurer, Vice President for HR  
**Term:** 6/23-5/26  
**Subcommittees:** Compensation &  
 Benefits, Eudoxia Girard Martin  
 Staff Award, University Senate:  
 Faculty Comp & Benefits  
 (secondary)



**Brock Turner**  
[turnerbm@purdue.edu](mailto:turnerbm@purdue.edu)  
*Extension Educator,  
 Field Extension*

**Member Area:** College of  
 Agriculture, Cooperative Extension,  
 College of Veterinary Medicine  
**Term:** 6/23-5/26  
**Subcommittees:** Compensation &  
 Benefits (Chair), Eudoxia Girard  
 Martin Staff Award (secondary)





**Amanda Ward**  
[acpward@purdue.edu](mailto:acpward@purdue.edu)  
*Student Affairs Specialist*

**Member Area:** Office of the President, Areas reporting to the Provost, Exec VP for Strategic Communication, Board of Trustees, Purdue Online

**Term:** 8/23-5/26  
**Subcommittees:** Compensation & Benefits, University Policy Committee



**Stephanie Winder**  
[winder@purdue.edu](mailto:winder@purdue.edu)  
*Program Coordinator, Mechanical Engineering*

**Member Area:** College of Engineering, Purdue Polytechnic Institute

**Term:** 6/23-5/26  
**Subcommittees:** Compensation & Benefits, University Senate: Staff Appeals Board for Traffic Reg., Rec/Well Advisory Board (secondary)



**Joey Woodyard**  
[djwoodyard@purdue.edu](mailto:djwoodyard@purdue.edu)  
*Director of Operations, Purdue Veterinary Hospital*

**Member Area:** Veterinary Medicine

**Term:** 6/25 – 5/28  
**Subcommittee:** Professional Development



# MaPSAC Resource Members



**Amy Boyle**  
[aeboyle@purdue.edu](mailto:aeboyle@purdue.edu)  
*Vice President for  
Human Resources*



**Lisa Schroeder**  
[schroe37@purdue.edu](mailto:schroe37@purdue.edu)  
*Lead Business Partner,  
Vice President for Human Resources*



**Michelle Jansen**  
[mjansen@purdue.edu](mailto:mjansen@purdue.edu)  
*Senior Director, HR  
Business Partners  
Vice President for Human  
Resources*



**Carly Stover**  
[rosenbe4@purdue.edu](mailto:rosenbe4@purdue.edu)  
*Internal Communications Specialist,  
Office of Marketing and Media*

