

Your guide to
off-campus
housing and
living.

2025-26

BOILERMAKER COUNTRY



YOU DESERVE THE BEST

When you live The Cottage Life, you're treating yourself to a one-of-a-kind student living experience, including some of the best amenities and resident perks in West Lafayette:

- 24-Hour Fitness Center
- Resort-Style Swimming Pool
- Hot Tub
- Sand Volleyball Court
- 24/7 Package Center
- Private 24-Hour Study Rooms
- Community-Wide Wi-Fi
- Fire Pit and Grilling Stations
- 24-Hour Resident Clubhouse
- Pet-Friendly Community
- Fully Furnished Homes
- In-Home Washer and Dryer
- Air Conditioning
- And More!



proudly managed by **HORIZON** Student



TheCottagesOnLindberg.com | (765) 876-3139



ON BEHALF OF PURDUE UNIVERSITY
AND THE CITY OF WEST LAFAYETTE

WELCOME TO THE COMMUNITY

We encourage you to familiarize yourself with the area and everything it has to offer. This guide is filled with a wide variety of local and campus resources. We hope you will utilize these resources to become an educated and engaged participant in the community. This guide will help you:

- **UNDERSTAND YOUR RIGHTS** and responsibilities as a tenant and a neighbor.
- **REVIEW THE POLICIES** and guidelines that have been established to ease your transition into off-campus living.
- **RECOGNIZE THE SAFETY** and security resources available to you.
- **LEARN TIPS** beneficial to having a successful rental experience.

Through collaboration and partnership, Purdue and West Lafayette are dedicated to providing you with services that create a clean, comfortable and safe living environment.

WE HOPE YOU HAVE A GREAT YEAR.

BETH MCCUSKEY
Vice Provost for
Student Life
Purdue University

ERIN EASTER
Mayor
City of West Lafayette

INSIDE BOILERMAKER COUNTRY

4-6 UNDERSTANDING YOUR LEASE

- Why You Need Renters Insurance
- What Is a Security Deposit?
- Know Your Rights and Responsibilities

7 HOW TO BE A GOOD NEIGHBOR

- Local Laws and Regulations

14-12 CODES YOU NEED TO KNOW

- The Guide to Parking and Trash
- Noise Violations
- How Are Code Violations Enforced?
- Make Sure Your Place Is Inspected
- Fair Housing
- How Many Roommates Is too Many?
- Keep Your Property in Shape

17 PERKS OF LIVING ON CAMPUS

- University Residences
- Purdue Memorial Union

18-19 GETTING AROUND TOWN

- Lafayette-West Lafayette Map

22-23 ALCOHOL LAWS YOU SHOULD KNOW

- What Happens when You Call for Help
- Host a Fun and Safe Party

28-29 CAMPUS SUPPORT

- Title IX, Purdue and You
- Counseling and Support Services
- Center for Advocacy, Response, and Education
- Common Student Regulations
- Parent & Family Connections
- Office of the Dean of Students

30 CAMPUS SAFETY

- Purdue University Police Department
- Your Campus, Your Safety
- Emergency Preparedness

34 FIRE SAFETY

- West Lafayette Fire Department
- Purdue University Fire Department
- Your Fire Safety Checklist

35 NEED HELP? CONTACT US

CONTACT US OFF-CAMPUS HOUSING

765-496-1841
offcampushousing@purdue.edu
purdue.edu/odos/offcampus

For a full directory of campus and safety resources, turn to page 35.



THE
CENTURY

STUDIO | 1 | 2 | 3

BEDROOM APARTMENTS



SCAN
ME!



  @TheCenturyApartments
833.232.0423 | TheCenturyApartments.com

By Buckingham



Scan me!



Apartment Location:
3579 GENOA DRIVE
WEST LAFAYETTE, IN

TITAN MANAGEMENT GROUP

THE OASIS

OPENING JULY 2025

Welcome to The Oasis in West Lafayette! Our apartments offer the convenience of in-unit laundry and covered parking, along with access to an on-site gym for your fitness needs. Located near Purdue University, residents can enjoy high-speed internet for all their online activities. Choose from 2 or 3 bedroom options, each featuring a high-end kitchen perfect for cooking and entertaining. Experience luxury living at The Oasis!

PROPERTY FEATURES



2-3
Bedrooms



2-3
Bathrooms



Kitchen



Up to
1063 sq. ft.

CONTACT US FOR MORE INFORMATION:



RENTFROMTITAN.COM



(765)838-8840

CHOOSING A PLACE TO LIVE

Choosing to live off campus is an **EXCITING STEP** in your college career, but house and apartment hunting isn't all HGTV cracks it up to be. There are many considerations when determining where to live and you should take time to consider all of your **OPTIONS**, learn about the housing search process and understand the terms of leasing. Searching early will allow you to have more options and lock in your preferred lease terms. And remember, when living off campus, you'll need to pay for **LIVING COSTS** such as utilities, cable and internet service.

You'll become a **DUAL CITIZEN** of both the Purdue and West Lafayette communities and you'll bear the extra responsibility of meeting the university's expectations for students and the community's requirements for its residents. Be a good neighbor. Be conscious of noise levels and parking regulations. Keep the property clean and tidy. But more on that later ...

HOUSING SEARCH TIMELINE

West Lafayette apartment rental companies often begin listing housing with Off-Campus Housing Services in September and October for the next fall semester. Housing within walking distance to campus tends to be the most sought-after housing option. Most leases in West Lafayette will start in mid-August and run until the end of the following July.

Based on historical trends, this is when we see units fill up:

- Houses within walking distance to campus will fill up quickly. They will likely be full by the end of **OCTOBER**.
- Studio and one-bedroom apartments near campus with below average price points will be the next to fill up. Individual units priced below \$800 per month will be rented out before the end of **NOVEMBER**.
- Apartment shares near campus and under \$600 per person/per month will also be full by the end of **NOVEMBER**.

- High-rise luxury apartment buildings will reach near-capacity numbers in **FEBRUARY AND MARCH**. Remaining units will often be their most expensive unit options.
- Multiple-bedroom shared apartments in line with average pricing for the area will continue to be available into the spring semester. Many of these units will fill up between **JANUARY AND MARCH**.
- Remaining units near campus and large apartment complexes farther from campus, will continue to fill up **THROUGHOUT THE SPRING SEMESTER**.

Lafayette apartments operate on a rolling basis and new units come available each month. They typically ask their current tenants to give 60-90 days' notice to vacate and will then post the unit as available.

Regardless of the time of year that you look for housing, it is likely that finding a place to live will take more than one day. Therefore, you should allow yourself enough time to make a wise decision about a place to live. We do not recommend signing a lease sight-unseen but understand that tenants do it when they are unable to arrive in the area before the semester begins. Most landlords will do a video walk-through of the apartment if you request a showing and are not able to be in the area.

LEASES

Leases are **LEGALLY BINDING** contracts, so you need to be in the know when you sign on the dotted line. Always read the lease carefully because it includes pertinent information regarding the responsibilities for you and your landlord.

Each lease will be different from the next on things such as lease duration, subletting and joint responsibility. Be sure to find a place and a lease that fits you best.

Keep in mind that a friend may not be the **IDEAL ROOMMATE**. Most leases hold you and your roommates jointly responsible, so that distracted friend who keeps forgetting to pay rent may cost you.



If you love a place but have some concerns about the lease, talk to the **LANDLORD**. Most leases are open to negotiation prior to signing.

THE LEASING PROCESS

Generally, the leasing process is similar to the process below.

Look around. You find a place to live by contacting area landlords and visiting open properties.

- **APPLICATION.** Once you have found a place, the landlord will ask you to fill out an application and will run a credit check.
- **BEWARE OF SCAMMERS.** If a listing seems too good to be true or the landlord won't speak to you or meet you in person, be wary. Learn more about how to avoid being scammed at offcampushousing.purdue.edu/avoid-scams-and-fraud.
- **FOR INTERNATIONAL STUDENTS.** The landlord may ask for a copy of your I-20 and/or letter of Purdue acceptance.
- **SECURITY DEPOSIT.** To hold the apartment, the landlord will likely require a security deposit and sometimes a portion of the rent.
- **SIGN THE LEASE.** If all goes well, then it's time to sign. Make sure you receive a copy signed by all parties to the lease. If you have any questions about the lease, contact Purdue Off-Campus Housing or Student Legal Services before signing.

WELCOME HOME!

WHY YOU NEED RENTERS INSURANCE

Now that you've found your new home, it is important to protect it. Purchase renters insurance to protect your belongings in case of theft, fire or other scenarios that could damage them. Most landlords have insurance, which covers the property but not your belongings. Although not always required, renters insurance is relatively inexpensive and is the best way to ensure your **BELONGINGS ARE PROTECTED**, safe and sound. It can usually be purchased through home or car insurance companies.

FOR MORE INFORMATION, contact Purdue Off-Campus Housing at [@offcampushousing.purdue.edu](https://offcampushousing.purdue.edu).

WHAT IS A SECURITY DEPOSIT?

A security deposit is money sometimes required by your landlord and held for the duration of your lease. Say you pay a \$500 security deposit at the start of the lease. You can get the **MONEY BACK** at the termination of your lease, depending on the condition of your place and other possible charges. The landlord may use the deposit to cover any unpaid rent, damages or unpaid utility fees.

► HOW CAN I ENSURE THAT I GET MY SECURITY DEPOSIT BACK?

The best way to ensure you get most or all of your security deposit back at the end of the lease is to conduct a **MOVE-IN** and a **MOVE-OUT INSPECTION**. Document in writing and with photos the condition of the rental unit when you arrive and before you leave. Take photos and videos with a current newspaper date visible.

Most importantly, return your keys and provide your forwarding address in writing to the landlord on the move-out date. Per Indiana Code § 32-31-3-12, once your landlord receives your keys and forwarding address, he/she has 45 days to return the security deposit or provide you with a list of charges taken from the deposit.

UNDERSTANDING YOUR LEASE

TAKE CARE of your apartment, too. The more damages — with the exception of normal wear and tear — that your apartment or house incurs for the duration of the lease, the less of your deposit money will be returned.

If the landlord does not provide one, rental inspection forms are available through Purdue Off-Campus Housing.

KNOW YOUR RIGHTS AND RESPONSIBILITIES

► WHAT ARE THE TENANT'S DUTIES?

Welcome to your new role as a tenant. With this new role comes some new rules. Also, it is your responsibility to notify your landlord of any needed **REPAIRS**, but you have to be patient and give the landlord a reasonable amount of time to make them. At the end of your lease, your rental unit should be in the same or better condition as when you moved in.



► WHAT ARE THE TENANT'S RIGHTS AND/OR THE LANDLORD'S OBLIGATIONS?

Your landlord is responsible for making sure your rental space is safe, clean and habitable from the day you move in. The landlord also must adhere to the housing codes and provide and maintain electrical, plumbing and other systems as detailed in your lease.

FOR MORE INFORMATION and complete details on tenant and landlord duties, contact the Student Legal Services office at **765-494-7503** or visit the website at purdue.edu/sls.

NOW LEASING



TOUR HUB STATE STREET TODAY.

Studios through 4-bedrooms with everything you need to thrive, from resort-style amenities, stunning designs, and a location minutes from Purdue.

APPLY NOW!



hubstatestreet.com
(765) 876-3163
111 S. Salisbury St.

HUB 
WEST LAFAYETTE
STATE STREET

HOW TO BE A GOOD NEIGHBOR

Getting acquainted with your neighbors is one of the best ways to become a contributing member of the community. Start early by introducing yourself once you have moved in and let your neighbors know you are open to discussing any issues that may arise. Knowing your neighbors will be beneficial for community safety, support and unification.

BE INVOLVED WITH CITY COUNCIL

West Lafayette City Council meetings occur on the first Monday of each month. Meetings are in City Hall at 222 N. Chauncey Ave. For more information, please visit westlafayette.in.gov.

SNOW REMOVAL

We can get a lot of snow here, which can mean a lot of slipping and sliding.

That's why **snow or ice must be removed from the sidewalk within six hours after daylight and after the snow has stopped falling.** Some landlords may take on this responsibility, while others may require you to break out your own shovel. Check with your landlord to be sure.

PETS

Sure, your pet is cute, but it still has to stay on a leash or within a secure fence while outside. And you are responsible for the removal of pet waste.

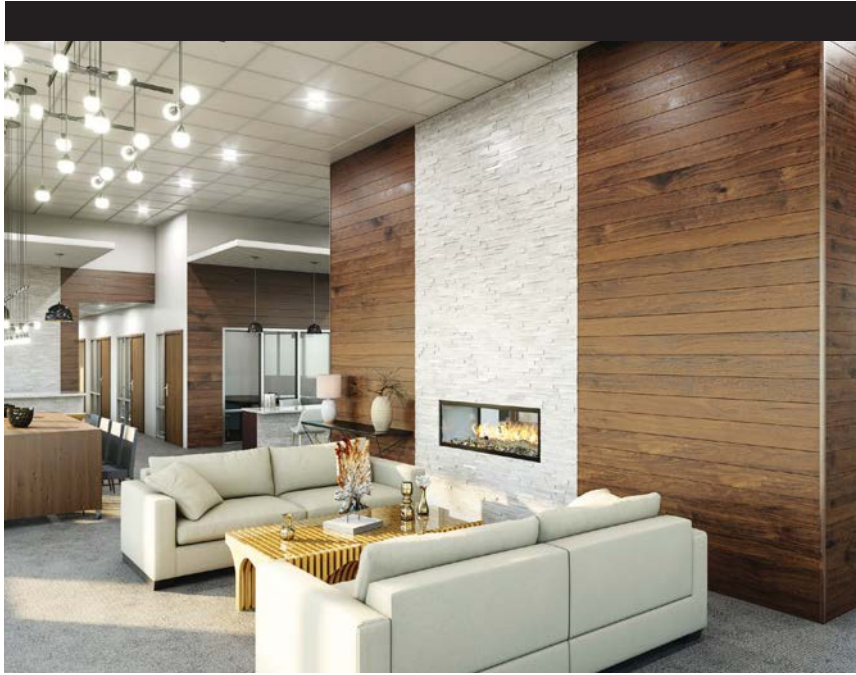
LOCAL LAWS AND REGULATIONS

LAWN CARE

If you are responsible for maintaining your yard, remember: lawns must be kept at a height below 10 inches. Keep shrubs and trees trimmed and free of dead or dangerous branches.

PATIO FURNITURE

Sometimes, there is nothing that says "college" more than that velvet couch on the porch. But be aware that any furniture on your porch or in your yard must be designed for outdoor use. Contrary to popular belief, upholstered furniture is not permitted for outdoor use.



WL WABASH LANDING

The Wabash River at your doorstep.
Purdue University is a short bike ride away.

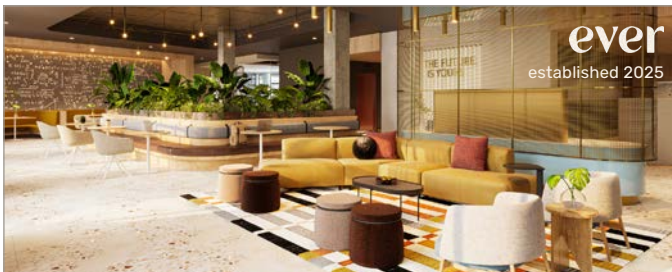
Wabash Landing is a collection of contemporary apartments offered in studio, one bedroom & two bedroom options. Interiors by Julie Bova are finished with granite countertops, stainless steel appliances, and wood style flooring. Every unit comes with it's own washer & dryer.

Amenities include controlled access, attached parking garage, luxury lobby with amenities area, high speed internet, state-of-the-art fitness center, rooftop lounge, study lounge & outdoor courtyard.



SCAN HERE TO
LEARN MORE!

TEXT OR CALL (765) 246-7979
WWW.LIVWABASHLANDING.COM
325 BROWN ST, WEST LAFAYETTE, IN 47906



ever
established 2025

THE FUTURE IS YOURS

now leasing for Fall 2026



- Fully Furnished
- 24/7 Fitness Center
- Smart Workout Mirror & Sauna
- Meditation Rooms
- Pool & Year-Round Hot Tub
- Jumbotron TV
- Public & Private Study Area



Take a Tour: 147 West Wood Street
Call us: (765) 300-3540 | Text us: (833) 266-6071

8 BOILERMAKER
COUNTRY



BURBERRY PLACE

765-447-8769 | burberyleasing@whlong.com



When you join the Burberry Place family you will enjoy a professional and courteous staff, contemporary living, and a warm place to call home! Come visit our convenient Lafayette apartment location and experience why "Quality is Our Family Tradition."

RISE ON CHAUNCEY



ELEVATED STUDENT LIVING CLOSE TO CAMPUS



FULLY
FURNISHED



IN-UNIT
WASHER/DRYER



ROOFTOP POOL
& HOT TUB



24 HOUR
FITNESS CENTER

AND PLENTY MORE!

Scan to see more!

riseonchauncey.com | (765) 375-0660 | 100 S Chauncey Ave, West Lafayette, IN 47906



FEATURED AMENITIES

- Gym Facility
- Game Room
- Two Spacious Dog Parks
- On-Site Laundry Facilities
- Basketball Court
- Tennis Courts
- Free Parking
- Clubhouse Lounge
- Conference Room with Free Wifi
- Pet Friendly - No Breed or Weight Restrictions!

**Off campus housing here
at Purdue University!**
**Just under a mile from campus,
Launch is close enough to walk,
bike, or catch the bus to class!**

NEW UPDATES

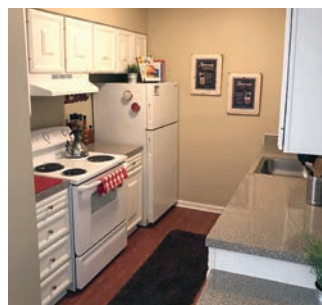
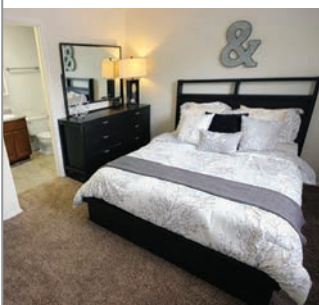
- Limited Short-Term Leases
- Rent-by-the-Bed, Per Person Pricing
- Double Occupancy Available in Studios and One-bedrooms

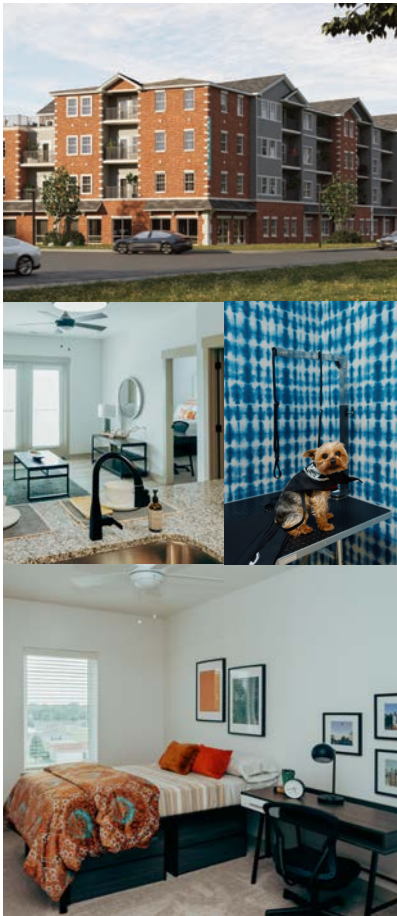
400 N River Rd, West Lafayette IN, 47906

 apartmentswestlafayette.com



(765) 743-4606





element 26

**LAFAYETTE'S
MOST EXCITING
NEW ELEMENT**

·SPORTS
SIMULATOR
·GAME ROOM
·PET WASH
·DESIGNER
APARTMENTS

**LEASING
FOR 2026**

E26APTS.COM



SCAN FOR
MORE INFO!



RIVER CROSS

915 N 6th Street
Lafayette, IN







Features:

- 2 & 3 Bed Units Available
- Off-Street Parking
- Private Patio
- Breakfast Bar

📞 765.637.0208
✉ info@bkmgmt.com
🌐 bkmgmt.com



GET MORE SPEND LESS

FREE Bonus Money

FREE Birthday Meal

FREE Weekly Treat

with a
Retail Dining Membership

PURDUE[™]
Food Co. —

**PURDUE STUDENTS,
FACULTY & STAFF**

Scan to learn more about eating on campus!





52 Flats

New Apartments and Renovated Duplexes in West Lafayette, IN!

Features

- 1, 2 and 3 bedroom options
- In-unit laundry
- Modern finishes
- 3.5 miles from Purdue
- Bus stop on site
- Valet Trash services
- Prices are for the whole unit!

Check out our current availability!



manager@rentlafayette.com

765-588-1575

Extra Pics!



www.52flats.com

THE GUIDE TO PARKING AND TRASH

The West Lafayette **NEIGHBORHOOD RESOURCE TEAM** enforces parking, city code and animal control to keep the community safe and in order. Here are some general guidelines to keep you in line and in the know of the code.

► PARKING

You cannot park your car on any city street for more than 24 hours. Certain areas limit parking to one, two or three hours, so be sure to **CHECK THE POSTED TIME LIMITS**. Trust us, if you violate the time limit, you will get a ticket. Keep your car off any lawn, even for repairs, and never park on private property.

► GARBAGE AND RUBBISH REGULATIONS

Keep your property looking clean and free of any trash. Use dumpsters or garbage cans with lids to store your garbage until it is removed. Tippecanoe County's main recycling drop-off is at the trash transfer station, located at 2770 N. Ninth St. in Lafayette. Hours are limited.

Keep in mind that appliances such as refrigerators, freezers and air conditioners will not be picked up by the city. You will have to pay and make special arrangements to throw these items away. For more information, contact the Street, Sanitation and Recycling Department at 765-775-5242.

The WL Street and Sanitation Department no longer sets out large dumpsters during move-in and move-out periods in August and May. The city will rent large dumpsters to property owners. Student renters with questions should contact their landlord or property rental agent. For more information, contact the Street and Sanitation office at 765-775-5242.



Scan QR code to opt in to notifications regarding trash pick-ups during the holidays, street closures, and emergency snow routes.



Computers, TVs and other electronics must be e-cycled. A van from Goodwill Industries can drive to your home to collect any items you'd like to donate. These efforts have significantly reduced the amount of trash on streets and in alleys each year.

For more information, visit westlafayette.in.gov/services/waste-and-removal/electronic-waste

For Tippecanoe County Recycling & Solid Waste information, visit tippecanoe.in.gov/recycle

NOISE VIOLATIONS

Noise that is audible to a person, property or premises **MORE THAN 50 FEET** from the source disturbs the peace if it is clearly noticeable between **11 P.M. AND 7 A.M.** Examples of noise violations that may also disturb the peace include:

- **CONSUMER FIREWORKS** are only allowed to be discharged during certain days and times. For more information review Chapter 14 – Fire Prevention and Protection.
- **RADIOS** or other devices for the reproduction or amplification of music.
- **MUSICAL INSTRUMENTS**
- **YELLING OR SHOUTING**
- **CONSTRUCTION OR MACHINERY** between the hours of 9 p.m. and 7 a.m.

Violations of the noise ordinance can result in fines ranging from \$50 to \$500.

HOW ARE CODE VIOLATIONS ENFORCED?

City housing inspectors routinely conduct **PROPERTY INSPECTIONS**. If you have a nuisance violation, you'll deal with code enforcement officers of the West Lafayette Police Department.

If you violate the code once, an officer may just issue a warning. If you receive a warning, it's time to change the suggested behavior, because if not, non-compliance will result in a \$50 Ordinance Violation Bureau **TICKET**. You'll then either pay the ticket through the City Controller's office (currently located within the police department) or pursue the matter in City Court. If you repeat the violation, the **FINES** will increase and other actions may ensue. So the best bet is to keep things simple and follow the code the first time around.

MAKE SURE YOUR PLACE IS INSPECTED

The City of West Lafayette has a **RENTAL HOUSING INSPECTION** program to protect the interests of tenants and property owners and the character of the neighborhoods. It also ensures the public health, safety and welfare of all individuals living in the city.

Every rental property must be **CERTIFIED** by the city. Rental properties may be inspected annually, every two years or every four years depending upon the location and the use of the property. But don't worry. For the most part, this won't be your problem because the property owner is ultimately responsible for compliance with the code.

However, you will have to tend to the **CLEANLINESS** of your place and **YARD MAINTENANCE** if your lease requires it.

FOR MORE INFORMATION on the inspection and certification of rental housing regulations, go to Chapter 6 of the West Lafayette City Code.

FAIR HOUSING

It is illegal to discriminate against individuals in housing-related activities based on race, color, national origin, religion, sex (including gender identity and sexual orientation), familial status and disability.

WHAT IS PROHIBITED?

- Refuse to rent or sell housing.
- Refuse to negotiate for housing.
- Set different terms, conditions or privileges for sale or rental of a dwelling.
- Provide different housing services or facilities.
- Falsely deny that housing is available for inspection, sale or rental.
- For profit, persuade owners to sell or rent (blockbusting).
- Deny access to or membership in a facility or service (such as multiple listing service) related to the sale or rental of housing.
- Deny a service animal or charging a pet fee for a service animal.
- Refuse reasonable accommodations for a disability.

If you believe you have been discriminated against, inquire at westlafayette.in.gov/hrc.

HOW MANY ROOMMATES IS TOO MANY?

► OCCUPANCY LIMITATIONS

(CHAPTER 102 SECTION 1-10-2: DEFINITIONS)

West Lafayette's New Unified Zoning Ordinance of Tippecanoe County (NUZO) outlines occupancy limits specific to certain areas. Simply put, that means residential areas have limits on how many people can occupy a single house or apartment. So if you planned on packing a house full with as many people as possible, think again.

QUESTIONS on specific properties should be directed to the West Lafayette Rental Inspection Office at **765-775-5167**.

CODES YOU NEED TO KNOW

KEEP YOUR PROPERTY IN SHAPE

The Housing-Property Maintenance Code establishes standards that pertain to the **SAFETY AND APPEARANCE** of your property. The code covers things such as exterior property, interior structure, electrical systems, fire safety, space requirements, sanitary conditions and more.

Again, maintaining most of this will be in the hands of your landlord. But as a tenant, it's important to **KNOW THE CODE** and do what you can to maintain your property in line with it. The role you play in keeping your property to code can fluctuate depending on your lease. Remember, you are always personally responsible for the cleanliness of your individual unit.

FOR MORE INFORMATION on housing inspection and certification, contact the West Lafayette Rental Inspection Office at **765-775-5167**

In addition to the rental inspection program, West Lafayette's Division of Fire Prevention also works to protect our tenants, property owners and visitors to our community by ensuring life safety and fire prevention codes are followed.

FOR MORE INFORMATION about West Lafayette's life safety and fire codes, see Chapter 14 – Fire Prevention and Protection of the West Lafayette City Code. You can also contact our division of Fire Prevention at **765-775-5178**.



You've never lived like this.

Walk or bike to class

Private bedrooms and bathrooms with upgraded penthouse units available

24-hour fitness centers with fitness classes available

24-hour Academic Success Centers with free printing

Professional, on-site management and maintenance

Individual liability leases and roommate matching available

Learn more:



OFF-SITE GUEST CARD

 AMERICAN CAMPUS COMMUNITIES

Where students love living.®

Rates/installments, caps, deadlines/dates amenities and fees are subject to change. Limited time only. See office for details.



AT THE HEART OF PURDUE'S CAMPUS

REVIVE 318

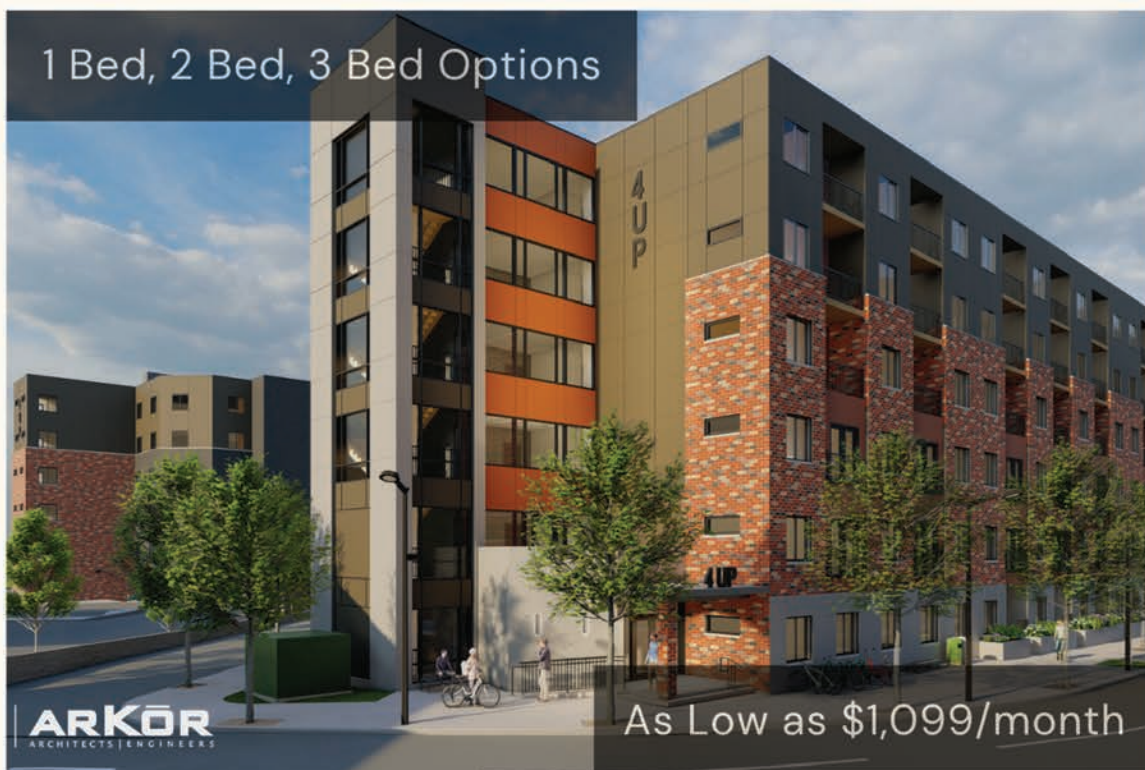


Just steps from academic buildings, restaurants, and recreational facilities, Revive 318 offers unparalleled convenience where you will enjoy the ultimate blend of luxury, location, and community.

- Luxury Modern Finishes
- Furnished Units
- Premium Fiber Internet
- Common Area Study Rooms
- One Block from Purdue CoRec
- Across from Starbucks and Chick-fil-A



318 N. Russell | leaserevive@pcmproperties.net | 765-560-5054 ext. 101 | revive318.com | [f](#) [@](#)



4UP APARTMENTS

More information: purdue4up.com; (765) 714-1690

UNIVERSITY RESIDENCES: HOME AWAY FROM HOME

Purdue University Residences offers a **VARIETY OF HOUSING OPTIONS** — from single and double rooms to suite-style and apartment-style housing — for students who want to live on campus.

With a total of 17 residence halls along with apartment communities that house more than 17,000 students, Purdue has the largest residential life program among universities that don't have live-in requirements. Here are just a few of the perks that take life in University Residences beyond expectations:

- **LIVING, LEARNING AND LEADERSHIP** opportunities.
- Award-winning **DINING COURTS**.
- State-of-the-art **LAUNDRY FACILITIES**.
- Unique **HALL PROGRAMMING**.
- **RESIDENTIAL ASSISTANTS** responsible for community-building.

University Residences gives students the freedom to experience as much as they can while living in a supportive, structured environment.

Plus, research shows that students who live in University Residences have higher GPAs, are more likely to stay in school and have a better chance of graduating in four years than students who live off campus.

TO LEARN MORE, visit housing.purdue.edu.

PURDUE MEMORIAL UNION: THE CORNERSTONE OF CAMPUS

From study spaces, lounge areas and events to bowling, dining and shopping, the Purdue Memorial Union captures the essence of what it

means to be a Boilermaker! The Union is your one-stop shop for enriching campus life and building community with your Purdue family. The Purdue Student Union Board (PSUB) works to provide campus-wide student programming to further enhance the residential campus experience. The Union also houses many restaurants and service providers for your convenience:

- 8Eleven Modern Bistro ■ Amazon@Purdue ■ ATM Services
- Boiler Up Bar ■ Evans & Taylor Eye Care
- Fidelity Investor Center ■ Leaps Coffee and Artisan Pastries
- Purdue Federal Credit Union ■ The Purdue Team Store
- Student Organizations ■ Union Rack and Roll Center
- The UPS Store ■ Veterans Success Center

The newly renovated Union Club Hotel opened in fall 2020 and the Boilermaker Station Welcome Center is now located in Stewart Center, Room 102. The ground floor recently underwent significant renovations. It now offers expanded outdoor terraces, multiple stages, private meeting rooms, and 12 new dining venues. Dining venues on the ground floor include:

- Anyway You Slice It ■ Boilermaker Market
- Burgers + Fries ■ Choolaah Indian BBQ ■ DSJ Asian Grill
- FoodLab rotating restaurant ■ Rose Market
- Tenders, Love & Chicken ■ Starbucks ■ Sushi Boss
- Walk-On's Sports Bistreaux ■ Zen

Through conferences, activities, meetings and events, the Union stimulates the exchange of ideas and bridges campus and personal life. The Union continues to be a beautiful central meeting place and the hub of campus, building on rich traditions that date to the early 20th century.

TO LEARN MORE, visit union.purdue.edu.

PERKS OF LIVING ON CAMPUS

Relax, explore, socialize and, above all, nourish yourself at one of Purdue University Dining & Culinary's locations. Purdue Dining & Culinary is committed to student success and, of course, great food. Its mission is to **FUEL THE FUTURE** and **BUILD A COMMUNITY** where everyone has a seat at the table.

Purdue Dining & Culinary offers a variety of meal plans to fit students' active schedules. More importantly, Purdue Dining provides a variety of cuisine — from global to homestyle — that pleases even the pickiest of palates. Purdue Dining & Culinary also offers students excellent employment opportunities that are flexible, offer great leadership experience and a chance to build community.

TO LEARN MORE, visit dining.purdue.edu.

GETTING AROUND TOWN

(LAFAYETTE-WEST LAFAYETTE)

CHAUNCEY VILLAGE DISTRICT

1. Chauncey Village
2. West Lafayette Public Library
3. Sonya L. Margerum City Hall

WABASH RIVERFRONT DISTRICT

4. River Market
5. Wabash Landing
6. Wabash Landing 9 Movie Theater
7. Levee Plaza
8. Tapawingo Park & Riverside Skating Center
9. John T. Myers Pedestrian Bridge
10. Riehle Plaza (Amtrak)
11. Riverside Promenade Deck
12. Tippecanoe County Courthouse
13. Tippecanoe County Government Building
14. Gr. Laf. Commerce/Economic Development
15. Charles A. Halleck Federal Building (Post Office)
16. Imagination Station

ARTS & MARKET DISTRICT

17. Civic Theatre (Moran Depot)
18. Wabash Cultural Center
19. TAF: The Art Federation
20. Thomas Duncan Community Hall
21. Lafayette Theater
22. Lafayette Brewing Company
23. Thiemie and Wagner Brewing Company
24. Lafayette Farmers Market
25. Long Center for the Performing Arts
26. Lafayette City Hall / Lafayette Police Dept.
27. Tippecanoe County Public Library
28. Knapptronix Brewing Company
29. Tippecanoe Historical Assoc. / Genealogy Center
30. Art Museum of Greater Lafayette

readysetgodowntown.com

LEGEND

- Hospital (legend below)
- Purdue University
- College/University
- High School
- Retail Store/Mall/Shopping Center
- Golf Course
- City Boundary
- State Highway
- County Road
- Interstate Highway
- U.S. Highway
- Trails (legend in lower left corner)
- Points of Interest (legend in lower left corner)
- Visitors Center (legend in lower left corner)
- Hotel/Motel
- Lodging (see back of map for listings)
- Campground

HOSPITALS

1. Indiana University Annet Health Hospital
2. Franciscan Health Lafayette East
3. Riverview Mental Health Hospital
4. Sycamore Springs Mental Health Hospital

TIPPECANOE COUNTY

TIPPECANOE COUNTY



TRAILS LEGEND

- A. Armstrong Park Linear Trail Loop
- B. Cattail Trail
- C. Happy Hollow Trail
- D. Munger Park Trail
- E. N. 9th Street Trail
- F. Northwest Greenway Trail
- G. Prophetstown State Park Trail
- H. Wabash Heritage Trail

AREA POINTS OF INTEREST

- A. Bicentennial Nature Area
- B. Brokerage Brewery
- C. Celery Bog and Lilly Nature Center
- D. Clegg Memorial Garden
- E. Columbian Park and Zoo
- F. Downtown Points of Interest (top inset)
- G. Escape Velocity Brewery
- H. The Farm at Prophetstown
- I. Fort Outatenon Historic Park
- J. Haan Museum of Indiana Art
- K. Mackey Arena
- L. People's Brewing Company
- M. Prophetstown State Park
- N. Purdue Horticulture Park
- O. Purdue Research Park
- P. Ross-Adams Stadium
- Q. Shamrock Dog Park (daypass needed)
- R. Teays River Brewing & Public House
- S. Tippecanoe Battlefield & Museum
- T. Tippecanoe County Amphitheater
- U. Tippecanoe County Fairgrounds
- V. Wildcat Creek Winery
- W. Wolf Park

VISITORS CENTER

A. Visit Lafayette-West Lafayette
B. Purdue Boilermaker Station
Welcome Center at Stewart Center

800-872-6648



homeofpurdue.com

RENT AT REDWOOD LAFAYETTE

Discover Pet-Friendly Off-Campus Housing with an Attached Garage!

Live 10 minutes from the Purdue campus in a two-bedroom, two-bathroom, single-story apartment at Redwood Lafayette! Conveniently located on the city bus route, Redwood Lafayette offers a variety of floor plans* starting at 1,294 square feet, all including stainless appliances, granite counters, LVP flooring, a personal patio and an attached two-car garage.

Find your new home today!

*All rental rates are per home. No individual leases.



byRedwood.com | (866) 203-9782



CHURCHWOODS

Get to Purdue & Downtown Lafayette
in under 10 minutes!

Pet Friendly
Fitness Center
High-Speed
Internet



Semi-Private Tower Entrances



EV Stations
On-site Bus Stop



Text: 430.222.0887
Call: 765-607-4800

Churchwoods-Apts.com

20 BOILERMAKER
COUNTRY

Flats on Main

- ✓ Nestled in a prime location
- ✓ Remodeled 2-Bed units
- ✓ Perfect for Purdue Students!



Features



2-Bedroom
Units



Your own
Parking Spot



Convenient
Downtown Location



Modern
Appliances

Book Your
Viewing Today!

Call 765-637-0208 or visit
bkmgmt.com for more details



765.637.0208

info@bkmgmt.com

bkmgmt.com

verve

WEST LAFAYETTE

Now
Leasing for
Fall 2026



Own your living experience

At VERVE, It's You > Everything

- year-round hot tub & swimming pool
- micro market for late-night snack
- study rooms to get caught up on lectures
- hang out in high def in our media hub & coffee bar
- 24/7 fitness center with yoga studio, sauna
- fully furnished 1 - 4 bedrooms available



vervewestlafayette.com | IG@vervewestlafayette | **CALL:** (765) 246-7928 | **TEXT:** (765) 205-1651
TAKE A TOUR: 150 S. Chauncey Ave, West Lafayette, IN 47906

INDIANA ALCOHOL LAWS

As a Purdue student, **YOU ARE RESPONSIBLE** for following local, state and federal laws regarding alcohol. The following information about the Indiana law is current as of publication and not intended to substitute for legal advice. This is not a complete listing of Indiana alcohol laws, but rather, some that may be more relevant to you.

CLASS C INFRACTION

(FINE OF UP TO \$500 AND LOSS OF MINOR'S DRIVER'S LICENSE)

- **MISREPRESENTATION OF AGE** for the purpose of purchasing alcoholic beverages.
- **A PERSON UNDER AGE 21** with a blood alcohol content (BAC) of 0.02 to 0.07 who operates a vehicle. In addition, the license may be suspended for up to one year.

CLASS C MISDEMEANORS

(IMPRISONMENT FOR UP TO 60 DAYS AND A FINE OF UP TO \$500)

- **ILLEGAL POSSESSION** of alcohol by a person younger than 21 years of age who knowingly:
 - 1) Possesses an alcoholic beverage;
 - 2) Consumes it;
 - 3) Transports it on a public highway when not accompanied by a parent or legal guardian.
- **SELL**, barter, exchange, provide or furnish an alcoholic beverage to a minor.
- **A PERSON YOUNGER THAN 21** years of age present in a tavern, bar or other public place where alcoholic beverages are served. A minor's driver's license also may be revoked for up to one year.
- **USE OF FALSIFIED DOCUMENTS**, such as a fake ID.

MISDEMEANORS

CLASS B MISDEMEANORS

(IMPRISONMENT FOR UP TO 180 DAYS AND A FINE OF UP TO \$1,000)

- **BEING IN A PUBLIC PLACE** or a place of public resort in a state of intoxication caused by the person's use of alcohol or a controlled substance.
- Knowingly, recklessly or intentionally **FURNISHING ALCOHOL TO A MINOR** (for the first offense).
- Renting, providing or arranging **A PLACE FOR MINORS** to consume alcohol (also known as the "Social Host Law").

WHAT HAPPENS WHEN YOU CALL FOR HELP

► PURDUE MEDICAL AMNESTY POLICY

In cases of student intoxication and/or alcohol poisoning that happen on Purdue's campus, on the premises of a **RECOGNIZED STUDENT ORGANIZATION (RSO)** or at a function sponsored by an RSO, the intoxicated student, as well as the student(s) seeking medical attention for the intoxicated student, will be exempt from disciplinary sanctions related to alcohol consumption.

In circumstances involving an RSO, the willingness of the members involved in seeking medical assistance for the intoxicated person will be viewed as a mitigating factor in the review process for any possible violations.

INDIANA LIFELINE LAW

The Indiana Lifeline Law provides that a person is immune from arrest or prosecution for certain alcohol offenses due to the person:

- **REPORTING A MEDICAL EMERGENCY;**
- **BEING THE VICTIM OF A SEX OFFENSE; OR**
- **WITNESSING AND REPORTING WHAT THE PERSON BELIEVES TO BE A CRIME.**

It also establishes a **MITIGATING CIRCUMSTANCE** for the sentencing of a person convicted of a controlled-substance offense if the person's arrest or prosecution was facilitated in part because the person requested emergency medical assistance for an individual in need of medical assistance due to the use of alcohol or a controlled substance.

The Indiana Lifeline Law allows a court to **DEFER ENTERING A JUDGMENT** of conviction for an individual arrested for an alcohol offense if the individual was arrested after a report that the person needed medical assistance because of the use of alcohol if certain conditions are met.

► BOTTOM LINE:

MAKE THE CALL! STEP IN TO HELP!

HOST A FUN AND SAFE PARTY

REMEMBER, IT'S ILLEGAL TO:

- **SELL ALCOHOL** or charge for cups, cover or music without a liquor license.
- **PROVIDE A PLACE** for minors to consume alcohol ("Social Host Law").

PARTY TIPS:

- Have your own **SOBER SECURITY**.
- Keep it **SMALL AND CONTAINED**.
- Let your **NEIGHBORS KNOW**.
- Don't let intoxicated people **DRIVE**.
- Keep **ILLEGAL DRUGS** out.

FRIENDLY REMINDER

- **MOBILITY SCOOTERS** are not a legal alternative travel method while not sober.

Blackbird Farms

NOW LEASING



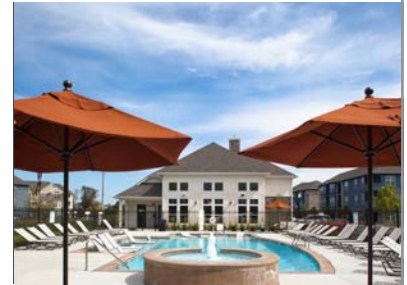
765-497-9892 | bbfleasings@whlong.com

There's no place like home, especially if you live at Blackbird Farms Apartments! From a sparkling pool perfect for cooling off in the summer to a pet-friendly community, you'll appreciate living in our newly renovated 1, 2, or 3-bedroom apartments!



WELCOME HOME TO THE IVY TOWNS + FLATS

- Fitness Center
- Swimming Pool
- Clubhouse with Pool Table
- Pet Friendly

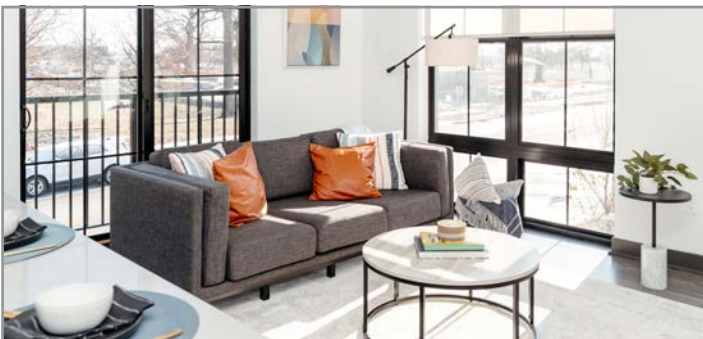


765.269.7106

TheIvyTownsandFlats.com

[TheIvyTownsandFlats](https://www.facebook.com/TheIvyTownsandFlats)

1900 Foxglove Way • West Lafayette IN 47906



provenance

Live like a classic at Provenance.

Provenance is a premier community offering high-end apartments, amazing amenities, and an unbeatable location in the heart of West Lafayette. Schedule a tour today!

provenanceapartments.com • 765-250-9988

1501 Mitch Daniels Blvd.

[provenanceapts](https://www.instagram.com/provenanceapts) [Provenance Apartments](https://www.facebook.com/ProvenanceApartments)

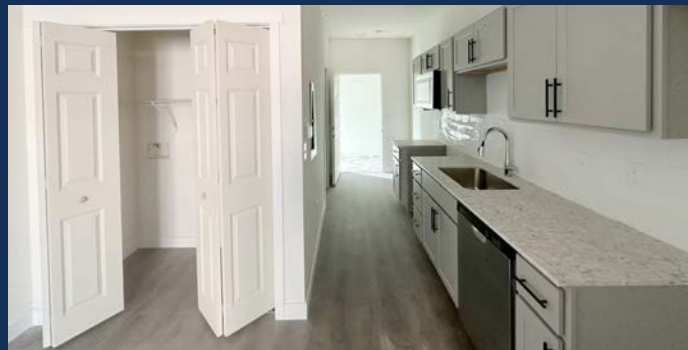


BRAND NEW! 1 BLOCK FROM CAMPUS

WEIDA ON WALDRON

Be the first to live at Weida on Waldron! Be close to it all! Weida on Waldron offers furnished Studio, 1 & 2 bedroom apartments featuring bright, open floor plans with large room sizes, 9 foot ceilings and all appliances including in-unit washer and dryer.

765-743-0317 • leasing@weidaapartments.com • weidaapartments.com





CV CRESTVIEW APARTMENTS

Home to Purdue students for over fifty years

- Studios
- Lofts
- One-bedrooms
- Two-bedrooms
- Four-bedrooms



cv-apt.com

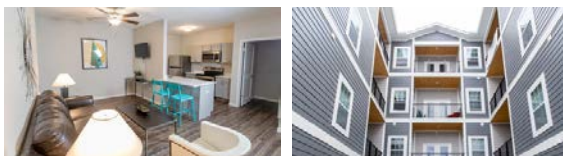
270 Littleton Street, West Lafayette, IN 47906
765-743-1881 | cv@cv-apt.com

Walk to class from any of our 7 locations

765-767-4760



120flatsleasing@whlong.com



120 FLATS NOW LEASING

Modern, convenient living near Purdue's campus!
Our sophisticated one and two-bedroom
apartments make move-in simple! No matter your
lifestyle, we have the right apartment for you!

26 BOILERMAKER
COUNTRY



LAFAYETTE'S
BEST PLACE
TO LIVE

- SPORTS
SIMULATOR
- GAME ROOM
- PET WASH
- DESIGNER
APARTMENTS

NOW LEASING!

ANVIL38.COM
765.761-6634



SCAN FOR
MORE INFO!



Welcome to



WEST HEIGHTS TOWNHOMES

- 2-3 Bedrooms
- 2.5 Bathrooms
- Attached 2-Car Garage
- Walk-in Closets
- Pond Views
- Luxury Finishes
- Pet Friendly



Scan for current availability!



765-588-1575 | info@rentwestheights.com | www.rentwestheights.com

TITLE IX, PURDUE AND YOU

Purdue University is committed to providing you with an environment that is **FREE FROM SEXUAL HARASSMENT AND ASSAULT**. If you have experienced sexual assault, relationship violence, sexual harassment or stalking, there are a variety of resources available to you. If you are unsure what to do, **purdue.edu/sexual_assault** has more detailed information about your options, including getting help from the university, the community and/or law enforcement.

You also can call **765-495-HELP (4357)** at any time to speak with someone who can help explain your options and connect you with resources.

COUNSELING AND SUPPORT SERVICES

Counseling and Psychological Services (CAPS) is Purdue's **CONFIDENTIAL COUNSELING** center, staffed by mental health clinicians who specialize in working with college students. It is a confidential, safe place to go if it could be helpful to talk with a trained professional about any concern you may have. Walk-in services and emergency consultations are available.

► CONFIDENTIAL COUNSELING

Counseling and Psychological Services (CAPS)

- Purdue University Student Health Center (PUSH) Room 224
765-494-6995.
- Three satellite locations are also available.

In a mental health crisis and need help after hours?

Call 765-494-6995, press 1, and speak with a clinician through our after hours crisis line.



The following offices also are available during regular business hours:

► MEDICAL ASSISTANCE

- Purdue University Student Health Center (PUSH)
601 Stadium Mall Drive,
Second Floor
765-494-1700

► LAW ENFORCEMENT (24/7)

- 911 (Emergency)

Other law enforcement contact information can be found in the back of this guide.

CENTER FOR ADVOCACY, RESPONSE, AND EDUCATION (CARE)

Windsor (Duhme Hall), Room 139
205 N. Russell St.
495-CARE (2273), 24/7
CARE@purdue.edu

CARE provides confidential support and advocacy for survivors of sexual violence, dating violence and stalking. CARE staff members provide resources and direct services that are nonjudgmental, survivor-focused and empowering. CARE recognizes that each person's experience is unique, and staff members are available to help each survivor assess their reporting options and access resources that meet personal needs. CARE staff members also can provide information and other support services to friends and family of survivors. In addition to direct survivor services, CARE offers campus-wide programming on sexual violence, consent and bystander intervention, among other topics.

PARENT & FAMILY CONNECTIONS

purdue.edu/parentandfamily
765-496-0524
parents@purdue.edu

In addition to providing Purdue parents and families with information about the university and supporting their students — everything from tips on care packages to health and safety on campus — Parent & Family Connections also provides communications and programs/events.

OFFICE OF THE DEAN OF STUDENTS

purdue.edu/odos
Schleman Hall, Room 216
765-494-1747

As members of the Purdue community, we strive to promote the safety and well-being of the community. If you are concerned about a student, please fill out a Student of Concern Report by visiting purdue.edu/odos.



COMMON STUDENT REGULATIONS

Living off campus is a major milestone in your college career and like any new endeavor, there are some responsibilities to keep in mind for making your transition as smooth as possible.

All Purdue students, whether they live on or off campus, are expected to be familiar with and follow the policies outlined in the **REGULATIONS GOVERNING STUDENT CONDUCT**. Here is a rundown of some of the more common issues for off-campus students:

- The **POLICY ON PHYSICAL ABUSE** speaks to behaviors that place other individuals in danger, regardless of where that behavior takes place or who the individuals may be. Some examples of these behaviors include operating a vehicle while intoxicated, being intoxicated in public, providing alcohol to minors and engaging in physical confrontations and assaults.
- Approximately 150 students per year will be disciplined for violations of the University's **POLICY ON ILLEGAL DRUGS AND CONTROLLED SUBSTANCES**. This includes being in possession of illegal drugs such as marijuana and ecstasy, as well as more egregious behavior like selling and distributing illegal drugs. Off-campus students also are urged to guard all prescription medication and to not provide those substances to others.
- **THEFT** from members of the university community is prohibited. Take inventory and **SECURE YOUR BELONGINGS** to ensure they won't be stolen. In addition, be on the alert and report any suspicious behavior or activities in your neighborhood to the Purdue University Police Department and/or the West Lafayette Police Department.

PURDUE UNIVERSITY POLICE DEPARTMENT

purdue.edu/police

The university attempts to provide a safe and secure environment for students, staff and visitors. However, it is only possible to maintain **SAFETY AND SECURITY** when every student and staff member takes an active part in the effort.

The Purdue Police Department offers various programs focusing on crime **PREVENTION AND DETECTION**:

- Bike patrol.
- Purdue Student Security Patrol.
- Public information.
- Group presentations.
- K-9 program.
- Laptop registration.
- Bicycle registration.
- Citizen's Police Academy.
- Rape Aggression Defense (RAD).

YOUR CAMPUS, YOUR SAFETY

purdue.edu/ehps/police/reports/YourCampus.pdf

This publication/PDF is full of important emergency information that every student and staff member should know:

- To inform students and staff of the university's more than 200 policies and programs that promote safety and security.
- To **INCREASE AWARENESS** by summarizing recent crime data.
- To suggest ways that students and staff can **DETER CRIMINAL BEHAVIOR** and promote the safety of people and possessions.
- To satisfy the Higher Education Opportunity Act and the Jeanne Clery Act requirement.

EMERGENCY PREPAREDNESS

purdue.edu/emergency_preparedness

The Campus Emergency Preparedness and Planning Office is responsible for the emergency preparedness and planning activities on the Purdue campus. The office is tasked with the oversight of the university's **"ALL-HAZARDS"** Integrated Emergency Management Plan, which will be used in the event of a natural disaster or a human-caused incident that strikes campus.

Purdue is a **VERY SAFE CAMPUS**. However, everyone should develop individual plans on how to respond to emergency incidents. The **"YOUR CAMPUS, YOUR SAFETY"** publication and the Emergency Preparedness website are good resources to help you get started.

- **LEARN MORE** about Purdue's emergency preparedness programs.
- Find out more about the **"EMERGENCY PROCEDURES GUIDE"** and the Building Emergency Plan.
- Locate **EVACUATION** and shelter in place information.
- Review the **"QUICK REFERENCE GUIDE."**
- Learn more about **PURDUE ALERT**, the university's multilayered emergency warning notification system.
- Sign up to receive emergency text messages at purdue.edu/securepurdue.

ROAD PROJECT UPDATES

For the latest road projects underway in West Lafayette, please visit **WLMoves.com**.

LUXURY HAS A NEW ADDRESS

You're invited to experience the next evolution of luxury student living in West Lafayette! Schedule a tour with our friendly team and discover can't-miss resident perks:



Just 3.3 miles to campus



Pet-friendly with dog park



Studio, 1-bed, 2-bed homes



WL

WABASH LOFTS
WEST LAFAYETTE

proudly managed by **HORIZON** Residential

GET IN TOUCH TO CLAIM YOUR SPOT TODAY!

WabashLofts.com | (765) 805-0390



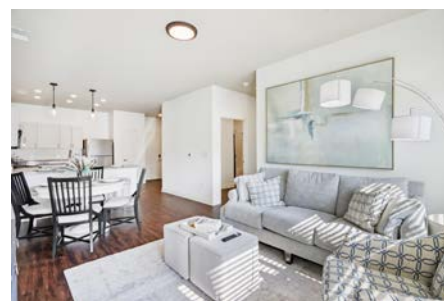
Experience Elevated Living. Where Luxury Meets Convenience.



Dog Park
Pool
Fitness Center
Washer/Dryer
Outdoor Fireplace & Grills
Private Balconies or Patios



PRECEDENT FLATS
APARTMENT HOMES



4854 Precedent Way • Lafayette IN | 765-771-7085 | precedentflats.com | PrecedentFlats



2053 WILLOWBROOK DRIVE
WEST LAFAYETTE, IN 47906

SPACE TO LIVE

**FULLY FURNISHED
IN-UNIT WASHER AND DRYER
PET FREINDLY**

FLOORPLANS AVAILABLE

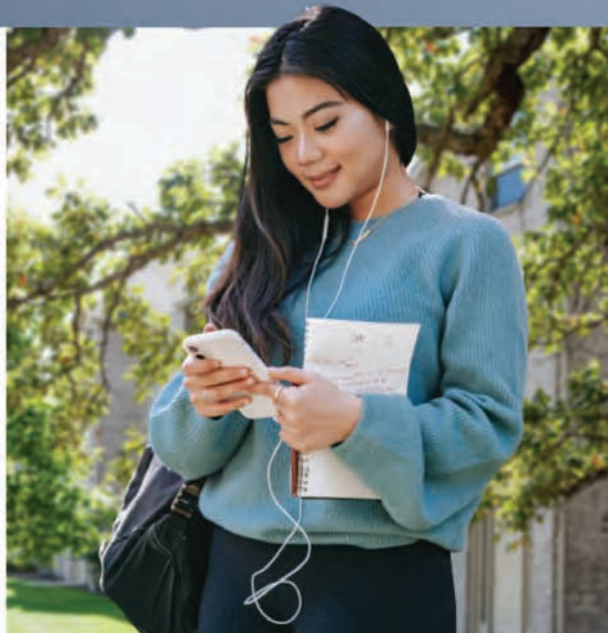
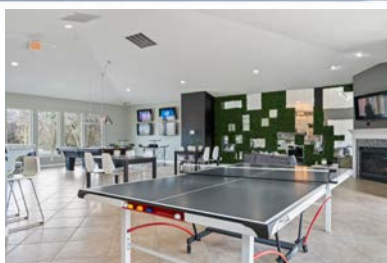
- 2 BEDROOM & 1 BATH
- 3 BEDROOM & 2 BATH
- 4 BEDROOM & 2 BATH



FOR MORE INFORMATION: WWW.LIVEVILLAGEWEST.COM

THE FAIRWAY

Best rates in West Lafayette, IN



1304 PALMER DRIVE, WEST LAFAYETTE, IN 47906 | (765) 876-3948

thefairwayapts.com



Minutes from Purdue and downtown Lafayette!

1, 2, and 3 bedroom apartments
Private balcony/patio • Full size washer/dryer
Community pool • Close to shopping



765.743.0489 | maynehomes@gmail.com
winfieldfarmsapts.com

402 Brunswick Drive • Lafayette IN 47909



Looking for housing?

VISIT THE PURDUE OFF-CAMPUS HOUSING WEBSITE!

Map-based housing search

Rental resources

Roommate finder

Sublet listings



offcampushousing.purdue.edu 🔍

WEST LAFAYETTE FIRE DEPARTMENT

765-775-5175

If you're a Purdue student living off campus, the West Lafayette Fire Department (WLFD) responds when you **DIAL 911** for a fire or medical emergency.

OUR GOAL IS TO KEEP YOU SAFE. The "Keep Me In and I'll Get You Out" fire prevention program was developed as a reminder of the importance of keeping batteries in your smoke alarms. That's why free smoke alarm batteries as well as **FREE SMOKE ALARMS** are available to any off-campus student who needs them.

Feel free to stop by any of **THREE WLFD FIRE STATIONS:**

- **STATION 1** at 300 North Street on campus.
- **STATION 2** at 531 W. Navajo St.
- **STATION 3** at 1100 W. Kalberer Road.

Since two-thirds of Purdue students live off campus, it's imperative that you know about fire prevention and safety.

Staying safe starts with you. And the West Lafayette Fire Department is **READY TO HELP.**

PURDUE UNIVERSITY FIRE DEPARTMENT

purdue.edu/fire

Established in 1963, the Purdue University Fire Department is **UNIQUELY TRAINED** to respond to many different types of campus emergencies. The department consists of an advanced life support (ALS) fire engine, a 102-foot aerial tower fire apparatus, two ALS ambulances, a command vehicle, several emergency response trailers and an airport response truck. Each fire department member holds a **STATE OF INDIANA CERTIFICATION** for firefighter, EMT or paramedic, airport firefighter or hazardous material technician. They also have completed other specialized training.

Purdue fire safety statistics and policies can be accessed on the Web by visiting the fire department's home page at purdue.edu/fire or by calling **765-494-6919**.

YOUR FIRE SAFETY CHECKLIST

SAFETY STARTS WITH PREVENTION!

- ☐ **YES** ☐ **NO** Does your room have a working **SMOKE DETECTOR**?
- ☐ **YES** ☐ **NO** Does your building have a **FIRE ALARM** system?
- ☐ **YES** ☐ **NO** Does your building have a **FIRE EXTINGUISHER** and the extinguisher has been inspected annually?
- ☐ **YES** ☐ **NO** Does your building have an automatic **SPRINKLER SYSTEM**?
- ☐ **YES** ☐ **NO** Do you have two **ESCAPE ROUTES**? Remember to check the windows to see if they can be opened and are not broken or painted shut.
- ☐ **YES** ☐ **NO** Are the **HALLWAYS AND EXITS** free from debris and furniture?
- ☐ **YES** ☐ **NO** Are your **EMERGENCY EXITS** clearly marked and visible?
- ☐ **YES** ☐ **NO** Are your **ELECTRONIC DEVICES** plugged into an approved ground fault power strip? If possible, keep electronics off the floor to avoid danger from water spills or floods.
- ☐ **YES** ☐ **NO** Is your **ROOM ORGANIZED** to reduce chances of an electrical overload?

911
ALL EMERGENCIES

POLICE

Purdue Police Department.....	765-494-8221
West Lafayette Police Department	765-775-5200
Lafayette Police Department	765-807-1200
Tippecanoe County Sheriff's Department	765-423-9388

FIRE

Purdue University Fire Department.....	765-494-6919
West Lafayette Fire Department	765-775-5175
Lafayette Fire Department	765-807-1600

COMMUNITY RESOURCES

► PURDUE

Center for Advocacy, Response, and Education (CARE)	24/7: 765-495-CARE (2273)
Counseling and Psychological Services (CAPS) After Hours	765-494-6995
Office of Student Rights and Responsibilities	765-494-1250
Office of the Dean of Students	765-494-1747
Parent & Family Connections.....	765-496-0524
Purdue Crisis Line	765-495-4357
Purdue Off-Campus Housing.....	765-496-1841
Purdue Student Activities and Organizations.....	765-494-1231
Purdue Student Legal Services	765-494-7503
Purdue University Retail Pharmacy.....	765-494-1374
Purdue University Student Health Center (PUSH)	765-494-1700

► WEST LAFAYETTE

Mental Health America (MHA) Crisis Center.....	765-742-0244
Street, Sanitation and Recycling Department.....	765-775-5242
West Lafayette City Hall	765-775-5100
West Lafayette Department of Development	765-775-5160
West Lafayette Rental Inspection Office	765-775-5167

This publication was compiled by:

OFFICE OF OFF-CAMPUS STUDENT SERVICES • Schleman Hall, Room 217 • 656 Oval Drive, 47907
765-496-1841 • offcampushousing@purdue.edu • purdue.edu/odos/offcampus

NEED HELP? CONTACT US

Hi VINE



Luxury apartments just steps from Purdue University

- 1 block from Purdue
- Large apartments, spacious floorplans, 9 foot ceilings
- All appliances including washer & dryer
- Fully furnished (with Queen-sized beds)
- June, July, and August starting times - Call for updated list!

(765) 743-0317

leasing@weidaapartments.com

302 Vine St, OFC
West Lafayette, IN 47906

weidaapartments.com

@weida_apts Weida Apartments



Established in 1972, Weida Apartments is locally owned & operated by Purdue Alumni

Experience downtown living: redefined.

The Ellsworth was carefully designed to provide a unique and modern living experience with stunning outdoor spaces, modern amenities, convenient services, and beautiful apartments.

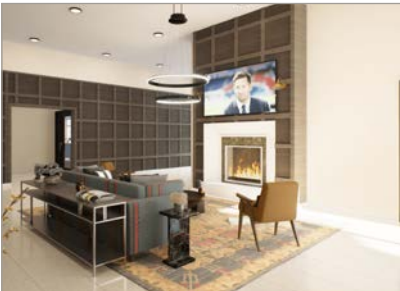


The Ellsworth

475 South Street • Lafayette IN 47901

Modern living downtown.

888-995-6807 | ellsworth@ysmgmt.com | theellsworthapartments.com | TheEllsworthApts



**DELPHI'S
BEST PLACE
TO LIVE**

- DESIGNER GYM
- ROOFTOP PATIO
- PET WASH
- DESIGNER APARTMENTS

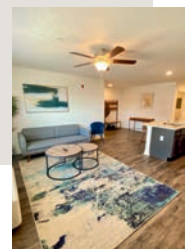
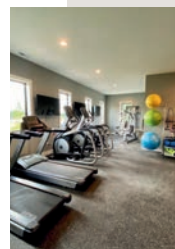
NOW LEASING!

INTERURBANDELPHI.COM
765.393.9845



SCAN FOR
MORE INFO!

WR WESTRIDGE FLATS



Live Comfortably. Live Close. Live at WestRidge Flats.
Named the Best Apartment Complex for the last 3 years
by Best of West Lafayette List

- ✓ Quiet, comfortable living environment
- ✓ Modern, spacious apartments
- ✓ On-site amenities designed for professionals
- ✓ Convenient location

WestRidge Flats is proud to support the innovative community at Purdue Research Park by offering an **exclusive 10% corporate discount** on monthly rent for full-time employees of the companies listed below.

- Arxan Technologies, Inc.
- Akina, Inc.
- Butler America Aerospace
- The Chao Center
- Cook Biotech, Inc.
- CoVideo
- C-SPAN Archives
- Delphi E&S - Verification Lab



· Railyard CoSpace members

- Dow AgroSciences
- Endocyte
- FLIR Systems Inc.
- Imaginestics LLC
- Cook MED Institute
- Perfinity Biosciences
- Simulex Inc.
- Spensa Technologies



PURDUE.EDU 37

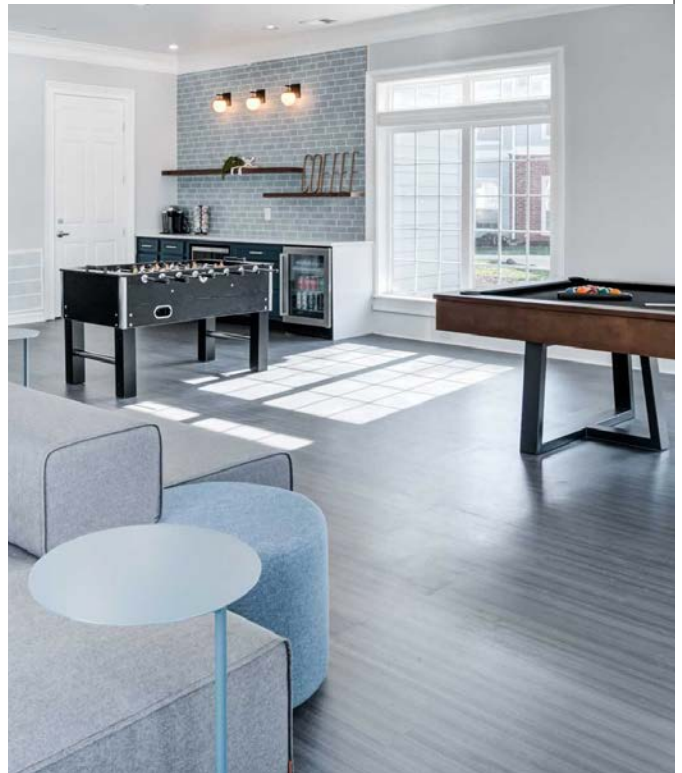
the Lodge

on the trail



Fully furnished 2 & 3 bedroom off-campus apartments near Purdue

- Pet-friendly
- On CityBus route
- Private bathrooms
- High-speed Wi-Fi included
- Stainless steel appliances
- 50" smart TV included
- Private covered balcony
- Dishwasher & microwave
- Full-size washer & dryer



OFFICE: (765) 464-1506

EMAIL: info@lodgetrailpurdue.com

SOCIAL: [lodgetrailpurdue.com](#)

lodgetrailpurdue.com

2101 Cumberland Ave. West Lafayette, IN 47906