

Advisor CRF Warning Confirmation and Registration Errors

Beginning with the 2021 VSTAR preregistration process, advisors will see pop up messages about course recommendations prior to submitting the Advisor Course Recommendation Form (Advisor CRF) to the student. These are the same pop up messages the student will see when submitting their CRF.

For future preregistration terms, the messages will only appear once the Schedule of Classes has been published.

When you are ready to advise, use the ([Advisor CRF](#)) as you normally would.

Advisor Course Recommendations ?

Keckler, Holly W
Session Administrator

Session: Fall 2021 (PWL)
Click here to change the session.

Degree Plan Send email confirmation

Student's Name: Student, Imogene Eugenia **PUID:** 13181330
Email: jstudnt1@purdue.edu **Term:** Fall 2021 (PWL)
Advisor/Email: keckler@purdue.edu **Status:** Pre-Registration Batch Scheduling (admins only) **PIN:** 999999

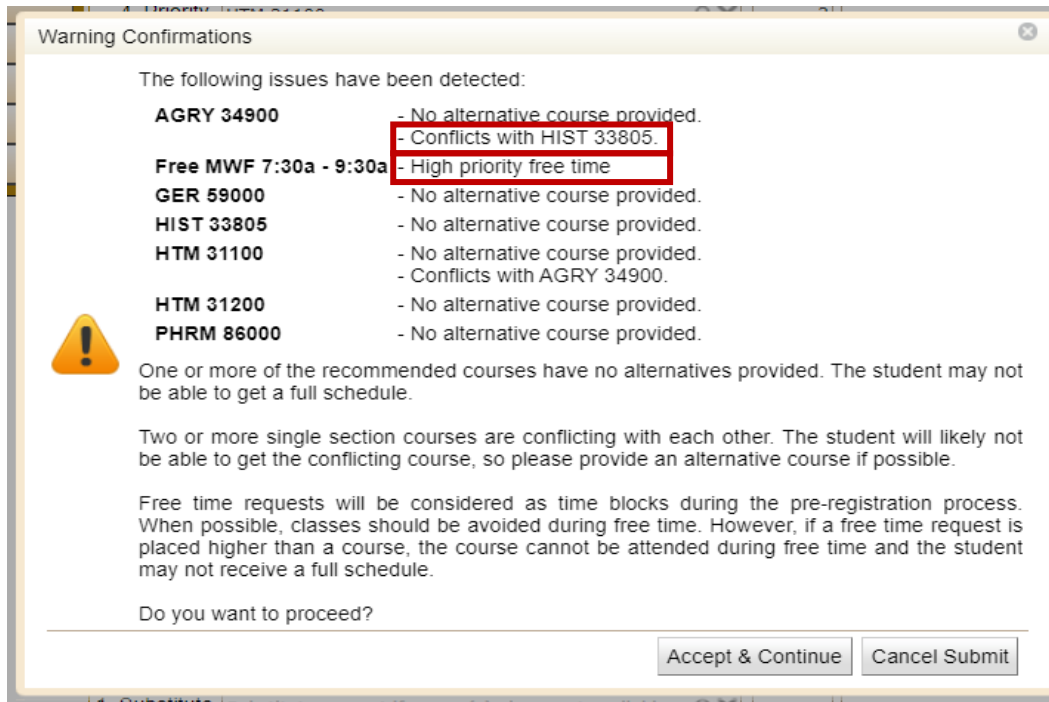
Advisor Course Recommendations		Credit Hours	Notes
1. Priority	Free MWF 7:30a - 9:30a		
2. Priority	HIST 33805	3	
1. Alternative	Alternative to HIST 33805		
3. Priority	AGRY 34900	3	
1. Alternative	Alternative to AGRY 34900		
4. Priority	HTM 31100	3	
1. Alternative	Alternative to HTM 31100		
5. Priority	HTM 31200	3	
1. Alternative	Alternative to HTM 31200		
6. Priority	PHRM 86000	2	
1. Alternative	Alternative to PHRM 86000		
7. Priority	GER 59000	1 - 4	

When you are ready to submit, the first pop up will be Warning Confirmations.

These messages include:

- 1:1 course conflicts
- No alternative course provided
- High priority free time

When possible, adding alternatives will increase the chance for the student to get a full schedule. This enhancement will allow advisors to address 1:1 conflicts at this stage by recommending alternative courses.

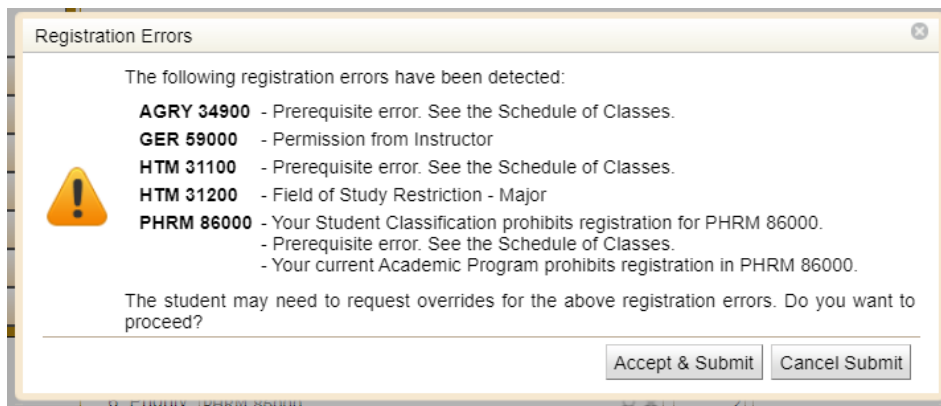


The second pop up will be Registration Errors.

These errors include:

- Instructor/departmental permissions
- Student level restrictions
- Field of study restrictions
- Max credit limit
- College restrictions

Addressing the errors at this stage (if it's a course in the advisor's home department/college) will potentially save going through the workflow process.



Once submitted to the student, the warning confirmations and error messages will display in the Advisor CRF under each course.

